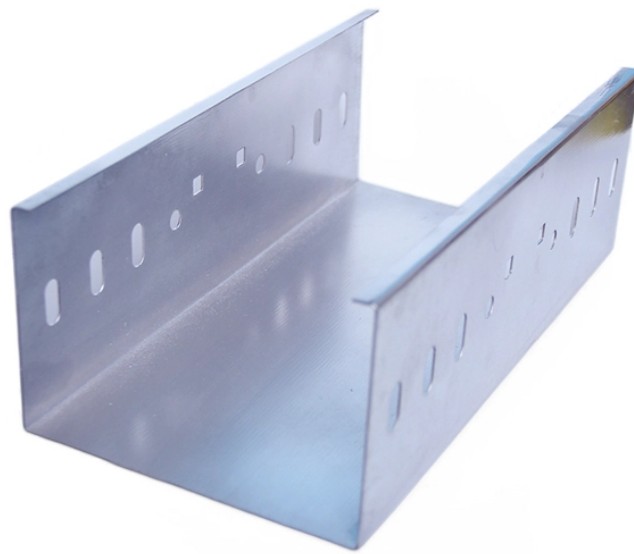


How many levels should the electrical distribution boxes at construction sites be divided into



Overview

This three-tier distribution system structure — with the main distribution board acting as the primary delivery point, secondary distribution boards serving as intermediate power hubs, and tertiary distribution boards directly supplying end-use equipment — ensures effective power. This three-tier distribution system structure — with the main distribution board acting as the primary delivery point, secondary distribution boards serving as intermediate power hubs, and tertiary distribution boards directly supplying end-use equipment — ensures effective power. The construction power distribution cabinet is designed specifically for the special situation of the construction site and complies with the relevant construction electricity specifications and standards of the construction department. The complete set of products can form a complete three-level. (1) The construction power distribution system should be set up with total distribution box, sub-distribution box and switch box, and be graded in accordance with the order of "total-division-open" to form a "three-level power distribution" mode. The switch box is set below the

main distribution board, and the power consumption equipment is below the switch box. The main distribution board. The distribution box has the characteristics of small size, simple installation, special technical performance, fixed location, unique configuration function, not limited by the site, relatively common application, stable and reliable operation, high space utilization, less land occupation and. The equipment within these boxes varies: primary distribution cabinets usually contain isolating switches, circuit breakers, and residual current devices (RCDs); secondary cabinets contain large three-phase circuit breakers; tertiary cabinets contain single-phase circuit breakers. Let's make an example for clarity: A newly constructed residential area introduces a 10kV power line to a substation.

How many levels should the electrical distribution boxes at construction



Visit the Electric Power Generation, Transmission and Distribution Standard Page for information on the final rule. OSHA maintains a listing of the most frequently cited standards for specified 2-6-digit North ...



Primary Distribution Box: Serves as the main distribution box for a construction site or project (usually only one). Secondary Distribution Box: Serves each floor or building as needed. ...



(1) The construction power distribution system should be set up with total distribution box, sub-distribution box and switch box, and be graded in accordance with the order of "total-division-open" ...



The low-voltage power supply system at the construction site shall be equipped with a general distribution box, a distribution box and a switch box to implement three-level power distribution.



Generally, first level distribution does not allow direct use of electrical equipment, and second level distribution will be by power equipment because it is three-phase electricity, while third ...



The power distribution system of the construction site is classified into three levels, and the main distribution board (or distribution room) is set. The switch box is set below the main distribution ...



Pull boxes are used for electric circuits supplying low-voltage electric loads which require conductors no larger than 1/0 AWG and no more than one 2-inch (52 mm) conduit entrance at each side.



Secondary: Intermediate panel, routes power to buildings or zones. Tertiary: Final distribution point for equipment or household use. This structure ensures effective power management, safety, and ...



This subpart addresses electrical safety requirements that are necessary for the practical safeguarding of employees involved in construction work and is divided into four major divisions and applicable ...



After stepping down the voltage through the transformer's low-voltage side (0.4kV), power distribution is achieved through three levels of distribution boxes: the main distribution board, secondary ...

Contact Us

For more information, pricing, or custom network solutions, please contact us:

Website: <https://hashherbcafe.co.za>

Email: hello@hashherbcafe.co.za

Phone: +27 63 814 7295

Address: 15 Galaxy Road, Linbro Business Park, Johannesburg, 2065, South Africa

This document is for informational purposes only. Specifications subject to change without notice.

