

How many grooves are typically used in a cable tray



How many grooves are typically used in a cable tray



Discover the essential guide to cable tray systems. Learn about ladder, trough, and wire mesh types, key components, and expert installation tips ...



Explore all types of cable trays—ladder, perforated, basket, solid, and channel. Learn their uses, materials, pros, cons, and key differences.



This article explains the main requirements and good practices for cable tray systems, including tray types, materials, loading, supports, bonding, cable selection, and installation details.

Waterproof and dustproof, reliable and safe

The outer classic click design allows the sealing ring of the cabinet and door to be seamlessly compressed without leaving a trace of gaps



This document provides guidance on designing cable tray systems for commercial and industrial applications. It discusses key factors to consider such as cable tray types, lengths, strength, load ...



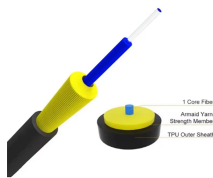
Discover the essential guide to cable tray systems. Learn about ladder, trough, and wire mesh types, key components, and expert installation tips for safe and organized cable management.



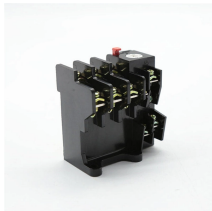
Short Span trays, often used for non-industrial indoor installations, are typically supported every 6 to 8-feet, while Intermediate Span trays are typically supported every 10 to 12-feet.



What is a cable tray ? ABB offers a number of different types of cable tray for use in a range of different applications and environments.



This guide covers the critical steps, from selecting the right electrical cable tray and performing accurate cable fill calculations to managing a safe cable pull through and ensuring all bonding and grounding ...



Discover over 100 expert answers about cable trays, covering key topics like material selection, load capacity, installation methods, and maintenance.



This guide covers cable ladder systems, cable tray systems, channel support systems and associated supports intended for the support and accommodation of cables and possibly other electrical ...



Ladder cable trays are available in widths of 6, 9, 12, 18, 24, 30, 36, and 42 inches with rung spacings of 6, 9, 12, or 18 inches. Wider rung spacings and wider cable tray widths decrease the overall strength ...

Contact Us

For more information, pricing, or custom network solutions, please contact us:

Website: <https://hashherbcafe.co.za>

Email: hello@hashherbcafe.co.za

Phone: +27 63 814 7295

Address: 15 Galaxy Road, Linbro Business Park, Johannesburg, 2065, South Africa

This document is for informational purposes only. Specifications subject to change without notice.

