

How is the maintenance of the tower communication system



Overview

The primary functions of communication tower maintenance include routine structural inspections to identify potential hazards, equipment calibration to maintain signal quality, preventive repairs to avoid costly failures, and emergency response services for urgent issues. Telecom tower maintenance is crucial for ensuring uninterrupted communication services and the overall integrity of the tower infrastructure. Regular inspections and preventive maintenance are key best practices that help identify potential structural weaknesses, prevent equipment failure, and. Regular maintenance of telecom towers prevents issues that cause essential components to fail, increases efficiency, saves money, reduces carbon emissions, and lengthens equipment life. We also can fully decommission your old tower site. With a focus on preventive care, quality workmanship, and adherence to safety standards, we offer regular inspections, corrosion treatment, and system upgrades. In addition, the Act's General Duty Clause, Section 5(a) (1), requires employers to provide their employees with a workplace free.

How is the maintenance of the tower communication system



Employees climb communication towers to perform construction and maintenance activities and face numerous hazards, including fall hazards, hazards associated with structural collapses and improper ...



With the capability to maintain any type of tower, including monopole, self-support, guyed, and stealth, our experienced maintenance crews identify structural deficiencies and develop robust corrective ...

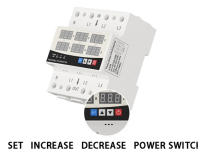


We conduct regular inspections, repairs, and upgrades, performing tasks such as structural assessments, corrosion protection, antenna adjustments, and safety system checks. Our services ...



Best practices for tower maintenance include regular inspections, detailed record-keeping, predictive and preventive maintenance approaches, and cost-effective strategies.

DATA ADJUSTABLE, EASY TO USE



SET INCREASE DECREASE POWER SWITCH

Maintaining telecom towers is critical to ensure uninterrupted coverage and avoid costly downtime. Regular maintenance prevents preventable issues, optimizes energy usage, and extends the tower's ...



The primary functions of communication tower maintenance include routine structural inspections to identify potential hazards, equipment calibration to maintain signal quality, preventive repairs to avoid ...



This guide breaks down the best practices for tower maintenance and explains how important it is for ensuring optimal performance and extending the longevity of your equipment.



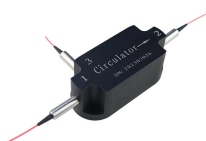
ANSI/TIA-222 Maintenance and Condition Assessment of Telecommunication Towers for the telecommunications industry? ANSI/TIA-222 is the “Structural Standard for Antenna supporting ...



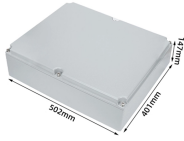
To optimize tower tenancy and accelerate important projects like 5G expansion, an accurate as-built model is necessary. This enables owners and operators to make actionable ...



This guide breaks down the best practices for tower maintenance and explains how important it is for ensuring optimal ...



Regular tower maintenance and inspection are essential to ensure the safety, reliability, and longevity of communication towers. Over time, towers are exposed to harsh environmental conditions that can ...



Pro Tower Maintenance specializes in communication tower maintenance, audits, repairs and service keeping your tower well maintained.

Contact Us

For more information, pricing, or custom network solutions, please contact us:

Website: <https://hashherbcafe.co.za>

Email: hello@hashherbcafe.co.za

Phone: +27 63 814 7295

Address: 15 Galaxy Road, Linbro Business Park, Johannesburg, 2065, South Africa

This document is for informational purposes only. Specifications subject to change without notice.

