

## How heavy can a network rack hold



### Overview

Most 42U server racks have a static weight capacity of 2,000 to 3,000 pounds (including the weight of the rack itself). A high-performance computing environment might include as many as 72 blade servers in a rack, along with networking gear. Increasing densities put the physical data center infrastructure under pressure to support more heavy equipment. These load ratings are specified by the manufacturer and ensure the structural integrity and stability of the rack. Even more so, this means that racks with higher load ratings will be able to. Server rack load ratings, particularly static and dynamic load thresholds, play a key role in helping you make that decision. In Bangladesh, where buildings often weren't engineered for heavy IT loads, ignoring rack weight is a mistake you can't afford. See the "Photo. The 50U Network Rack stands 93.

## How heavy can a network rack hold



The ideal solution to vertically manage your equipment or work area. They are made of heavy duty steel and the shelves can hold up to 450 pounds of load each



You will need to estimate the sum of your equipment's weight in ...



Most 42U server racks have a static weight capacity of 2,000 to 3,000 pounds (including the weight of the rack itself). However, some racks designed for light-duty applications may have a ...



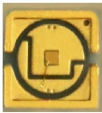
This guide breaks down how much server racks actually weigh, how to calculate their capacity, how to distribute equipment safely, and what to consider before buying —with practical ...



Thus, rack load capacity is the maximum weight a cabinet or rack can hold for a long time. A modern full-fledged server cabinet can accommodate up to ...



Product 2: Heavy-duty & durable design: Constructed with SPCC commercial cold-rolled steel, the sturdy cabinet shelf ensures long term durability and supports a total weight load of 50 pounds (22 ...



For example, a typical 2U or 4U server weighs 30-60 pounds. Multiplying this by the number of servers provides an estimate of the total load. Uneven weight distribution can put stress on specific parts of ...



The 50U Network Rack stands 93.75" tall, 20" deep, and 24" wide and can rackmount EIA-standard 19 inch equipment. It's heavy duty steel construction allows a maximum load capacity of 3000 lbs.



We provide detailed technical specifications for each rack and enclosure category to help you make informed decisions. Downloadable PDFs are available for the following:



Thus, rack load capacity is the maximum weight a cabinet or rack can hold for a long time. A modern full-fledged server cabinet can accommodate up to 72 blade servers with all the required ...



This guide breaks down how much server racks actually weigh, how to calculate their capacity, how to distribute equipment safely, and what to ...



You will need to estimate the sum of your equipment's weight in order to determine what capacity your rack will need. Purchasing a rack with a higher load capacity than necessary is ...



Each rack is independently Zone 4 certified to hold up to 2,000 lbs. and 1,250 lbs. of network equipment. Battery shelves are also compatible, making the rack ideal for core equipment or as a heavy-duty ...

## Contact Us

For more information, pricing, or custom network solutions, please contact us:

Website: <https://hashherbcafe.co.za>

Email: [hello@hashherbcafe.co.za](mailto:hello@hashherbcafe.co.za)

Phone: +27 63 814 7295

Address: 15 Galaxy Road, Linbro Business Park, Johannesburg, 2065, South Africa

This document is for informational purposes only. Specifications subject to change without notice.

