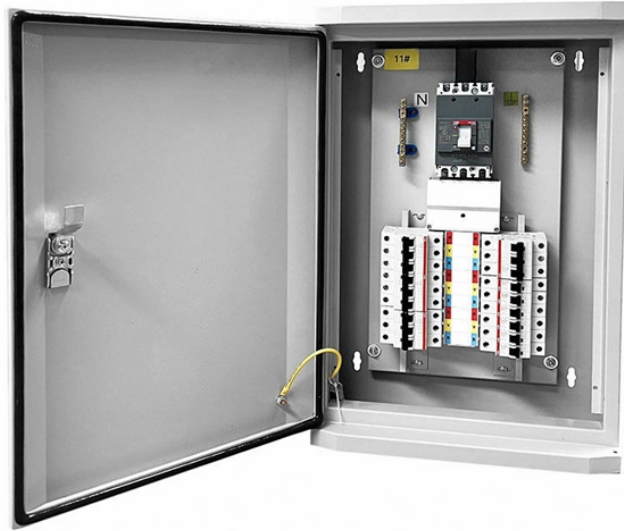


## Household distribution box circuit breaker fixing



## Household distribution box circuit breaker fixing



If you want to learn how to replace a circuit breaker (or resolve other tripped breaker issues), read our guide on how to reset a breaker or replace it!



Need to replace a breaker in a panel box? Check out our step-by-step guide for instructions, or call today to schedule an appointment!



Learn how to replace a circuit breaker. This guide gives tips on troubleshooting a circuit breaker issue and what to do when a tripped breaker won't reset.



Learn how to read and understand wiring diagrams for breaker boxes to ensure proper electrical configurations and safety measures.



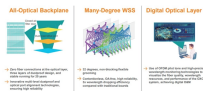
Find out how to properly wire an electrical panel box with a comprehensive diagram and step-by-step instructions.



By following these steps and prioritizing electrical safety, you can successfully change a circuit breaker in your breaker box as a DIY home repair. Remember to always double-check your ...



Understand the comprehensive process of installing a residential breaker box, ensuring safe power distribution and code compliance.



Clear, easy-to-read wiring diagrams and instructions for household circuit breakers including: a breaker panel box, 15amp, 20amp, 30amp, 50amp, and gfcı breakers.



Enjoy the videos and music you love, upload original content, and share it all with friends, family, and the world on .



The circuit breaker switch in the household distribution box depends on the area of the owner's house in the community. There are 5/6 circuits for ordinary single apartments, 7/8 circuits for small ...

## Contact Us

For more information, pricing, or custom network solutions, please contact us:

Website: <https://hashherbcafe.co.za>

Email: [hello@hashherbcafe.co.za](mailto:hello@hashherbcafe.co.za)

Phone: +27 63 814 7295

Address: 15 Galaxy Road, Linbro Business Park, Johannesburg, 2065, South Africa

This document is for informational purposes only. Specifications subject to change without notice.

