

HomeAssistant Access Switch

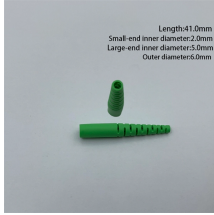


Overview

A device class is a measurement categorization in Home Assistant. It influences how the entity is represented in the dashboard. This can be modified in the customize section. For example, different states.



HomeAssistant Access Switch



Control PoE power on individual switch ports to remotely restart connected devices like cameras or access points. Toggle firewall rules, port forwarding, or traffic rules as part of broader home ...



I have been exploring the possibilities to use Fully Kiosk as a way to facilitate a few (up to 4) of my old android phones as a switch panels. My target: Mounting an android phone on the wall to ...



The Switch Manager is a User-friendly, centralized component for Home Assistant. It offers you an interface with which you can Clearly configure all actions of wireless switches no matter whether it is ...



You can assign variables to the switch from the top right menu, these variables can be access through the blueprint conditions or action sequences. The event or MQTT data can also be accessed inside ...



I have a couple of remotely controlled switches which I use to control mains voltage supply to some critical infrastructure components in my home. However, it is critical that these devices aren't ...



Instructions for setting up Home Assistant Switch with ESPHome that import states and allows control via your Home Assistant instance.



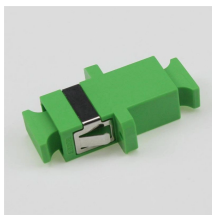
Instructions on how to set up your switches with Home Assistant.



This might very well become our most powerful platform as it allows anyone to integrate any type of switch into Home Assistant that can be controlled from the command line, including calling other scripts!



Home Assistant is open source home automation that puts local control and privacy first. Powered by a worldwide community of tinkerers and DIY enthusiasts. Perfect to run on a Raspberry Pi or a local ...



Switch manager is a centralised component to handle button pushes for your wireless switches. This includes anything passed through the event bus or MQTT. The component relies on ...

Contact Us

For more information, pricing, or custom network solutions, please contact us:

Website: <https://hashherbcafe.co.za>

Email: hello@hashherbcafe.co.za

Phone: +27 63 814 7295

Address: 15 Galaxy Road, Linbro Business Park, Johannesburg, 2065, South Africa

This document is for informational purposes only. Specifications subject to change without notice.

