

## High Temperature Resistant Independent Switch Test Report



### Overview

This test report summarizes the ISO-10605 ESD test results for the TIC12400-Q1 and TIC10024-Q1 with different external components that can be added for improved ESD performance. Detailed board and test setup information are also described in this report. The results are the same for lifetime of power semiconductors, a variety of important tests are performed by both manufacturers and end-use designers. Many of these tests are outlined in JEDEC Standards such as JESD22-A108D "Temperature, Bias, and Operating Life," JESD22-A110D "Highly Accelerated Temperature and Humidity. Sample Description: Well preserved before the test, 1 sample, these series of models are only different in model name. Inspection basis: According to client requirement. Degree of protection against access to hazardous IP2X / IP4X / IP5X parts and against harmful effects due to the ingress of solid foreign objects. This report is not valid as a CB Test Report unless signed by an approved CB Testing Laboratory and appended to a CB Test Certificate issued by an NCB in. Eaton's Cooper Power Series D-73P Air Switches have been developed to provide an industry standard Distribution Disconnect and Bypass Air Switches with Polymer or Porcelain insulators.

## High Temperature Resistant Independent Switch Test Report



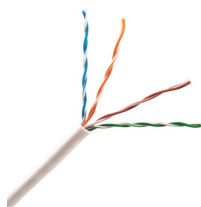
For a predictable and reliable system operation, system components have to be formally designed and fabricated for SEE hardness and followed by a detailed SEE testing to validate the design. This ...



Are there test reports shipped with the 837T-D temperature switches? If so what information is included in the test report? Yes, each switch is shipped with a test report. An example is included in the file ...



Electronic switches Test Report IEC 60669\_2\_1 - Free download as PDF File (.pdf), Text File (.txt) or read online for free.



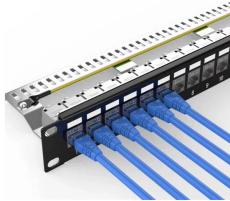
IECEE takes no responsibility for and will not assume liability for damages resulting from the reader's interpretation of the reproduced material due to its placement and context. The test results presented ...



This report is not valid as a CB Test Report unless signed by an approved CB Testing Laboratory and appended to a CB Test Certificate issued by an NCB in accordance with IECEE 02. General ...



The test process and test result is only related to the Unit Under Test. The quality system of our laboratory is in accordance with ISO/IEC17025. If there is any objection to report, the client should ...



This report shall not be reproduced, except in full, without the written approval of the Issuing testing laboratory. "(See Attachment #)" refers to additional information appended to the report.



The circuit breakers with reference temperature 40 °C and 55 °C are fully identical except the distance between thermal bimetal components and leading lever. There are two colours of front cover in same ...



This report shall not be reproduced, except in full, without the written approval of the Issuing CB Testing Laboratory. The authenticity of this Test Report and its contents can be verified by contacting the ...

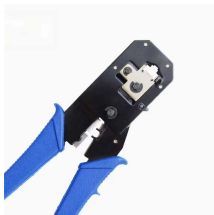


Figure 4. Cycled Bias Test.  $V_d$  cycles between 1200V to 1320V every 10 hours with a 50% duty cycle. Maintain temperature of 130°C for 1000 hours, and continuously measure  $I_d$ . Test 240 devices per ...



This report is not valid as a CB Test Report unless signed by an approved CB Testing Laboratory and appended to a CB Test Certificate issued by an NCB in accordance with IEC 60384-14.



2.1.3 To provide a report detailing the tests carried out and generated results in accordance with the Test Regime criteria, including calculations for Volume Weighted Average Return Temperatures ...



Eaton's Cooper Power Series D-73P Air Switches have been developed to provide an industry standard Distribution Disconnect and Bypass Air Switches with Polymer or Porcelain insulators. The report ...

## Contact Us

For more information, pricing, or custom network solutions, please contact us:

Website: <https://hashherbcafe.co.za>

Email: [hello@hashherbcafe.co.za](mailto:hello@hashherbcafe.co.za)

Phone: +27 63 814 7295

Address: 15 Galaxy Road, Linbro Business Park, Johannesburg, 2065, South Africa

This document is for informational purposes only. Specifications subject to change without notice.

