

High Return Loss Adapter Low Noise and Performance Comparison



Overview

This application note briefly discusses the fundamentals of both internal and external noise and identifies the tradeoffs associated in selecting the optimal amplifier for low noise design. External noise includes any type of external influences, such as external components and. This article helps network and optical field teams learn return loss transceiver measurement using practical test methods, so you can separate bad connectors, tired optics, and marginal assemblies before the helpdesk writes a novel. We can divide them up. APC connectors are better for low-loss fiber management. They lower signal reflection and have great return loss. It is important to know the difference between APC and UPC connectors. Electrical waves reflect when they encounter a change in the impedance of the medium they are traveling in.

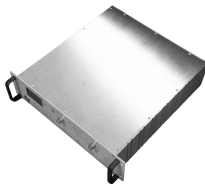
High Return Loss Adapter Low Noise and Performance Comparison



First, we will take a look at a typical receiver architecture and the LNAs role within it. From there, the article will offer some practical tips regarding things to consider when selecting a specific LNA device ...



high implies marked extension upward and is applied chiefly to things which rise from a base or foundation or are placed at a conspicuous height above a lower level.



Learn what Return Loss means in RF filters, why it affects signal stability, and how Temwell enhances matching through professional design, ...



Definition of high adjective in Oxford Advanced American Dictionary. Meaning, pronunciation, picture, example sentences, grammar, usage notes, synonyms and more.



In this comprehensive guide, we will explore the techniques and strategies for optimizing return loss in RF systems, including impedance matching, design considerations, and measurement ...



A good VSWR to aim for is at least 1.5. This is equal to a return loss of 14 dB or greater. The easiest way to improve return loss is to add an attenuator. In the example below an attenuator is added ...



Help choose the right school for a move or get contact info for all high schools in Orem, UT.



Learn how to perform return loss transceiver measurement with real test setups, pass/fail thinking, pitfalls, and ROI notes for optics teams.



In this paper, various Low Noise Amplifier topologies presented for high frequency applications. Distributed amplifier, source degeneration, common gate, common source with ...



Two students from Alpine School District's Vision Special Education Services program, are earning recognition for their outstanding achievements in the Braille Challenge, a nation... A two-year high ...



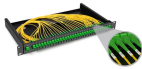
HIGH definition: having a great or considerable extent or reach upward or vertically; lofty; tall. See examples of high used in a sentence.



Learn what Return Loss means in RF filters, why it affects signal stability, and how Temwell enhances matching through professional design, testing, and materials.



Both Return Loss and VSWR assist the RF engineers in determining how good a match of a system is, as well as what percentage of the signal is being bounced back by impedance differences.



This application note briefly discusses the fundamentals of both internal and external noise and identifies the tradeoffs associated in selecting the optimal amplifier for low noise design.



High (adjective, informal): Intoxicated by drugs or alcohol. The word "high" is a versatile term with multiple meanings and applications, spanning physical elevation, emotional states, and ...



It's two and a half metres high and one metre wide. The corn grew waist-high (= as high as a person's waist) in the fields. high The garden is surrounded by a high wall. tall Mount Everest is the world's ...



Compare APC vs. UPC connector performance for low-loss fiber management. Find out which offers superior return loss and suits your network needs best.



Learn about voltage standing wave ratio (VSWR), return loss, and mismatch loss, which helps characterize the wave reflections in a radio frequency (RF) design.



If something is high, it is a long way above the ground, above sea level, or above a person or thing. I looked down from the high window. The bridge was high, jacked up on wooden piers. The sun was ...

Contact Us

For more information, pricing, or custom network solutions, please contact us:

Website: <https://hashherbcafe.co.za>

Email: hello@hashherbcafe.co.za

Phone: +27 63 814 7295

Address: 15 Galaxy Road, Linbro Business Park, Johannesburg, 2065, South Africa

This document is for informational purposes only. Specifications subject to change without notice.

