

Heat Flow Meter for Large Optical Module Factory



Heat Flow Meter for Large Optical Module Factory



HG-MAG-EG Intelligence Electromagnetic Heat Flow Meter (Electromagnetic Calorimeter) Consists Of Flow Measurement unit, Heat Calculation Unit And Matched Temperature Sensor (Pt1000). Flow ...



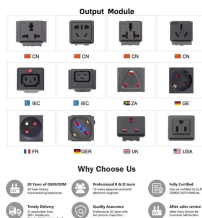
Unlike competitive units that rely on a single analog measurement of thickness, with limited accuracy, the FOX Heat Flow Meters feature optical encoders and stepper motors for independent position ...



HORIBA is the recognised leader of high performance mass flow meters, mass flow controllers, automatic pressure controllers and liquid vaporization systems used throughout the cutting edge ...



Measure heat flow with precision using our advanced Heat Flow Meter. Gain valuable insights into heat transfer processes for optimal performance.



Each plate contains multiple high power thermoelectric modules, matched with a surface thermocouple, and smart temperature control to optimize the speed, and accuracy of the plate temperatures.



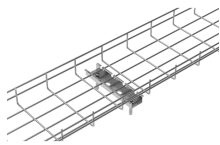
HFM 706 Lambda Series provides precise thermal conductivity measurements customized to your sample size. The HFM 706 Lambda Series comes in three versions, small, medium, and large, each ...



Our HFM series was designed and engineered to combine the highest accuracy, repeatability, widest temperature range and industry leading performance all at an exceptional value.



Each plate contains multiple high power thermoelectric modules, matched with a ...



The Heat Flow Meter is an easy-to-use technique for measuring the thermal resistance and thermal conductivity of insulation products, construction materials, packaging, and assemblies.



The HFM 706 Lambda Series is equipped with dual heat flux transducers that continuously monitor heat flow with exceptional sensitivity and accuracy. Our advanced calibration process uses reference ...

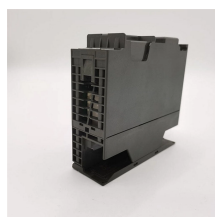


Table-mounted stand-alone unit, with 3 open sides suitable for testing larger samples without cutting. The innovative and efficient design incorporates over a decade of ongoing feedback and discussion ...

Contact Us

For more information, pricing, or custom network solutions, please contact us:

Website: <https://hashherbcafe.co.za>

Email: hello@hashherbcafe.co.za

Phone: +27 63 814 7295

Address: 15 Galaxy Road, Linbro Business Park, Johannesburg, 2065, South Africa

This document is for informational purposes only. Specifications subject to change without notice.

