

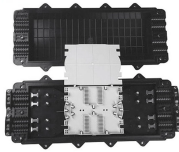
## Good Brands for 4-Core Terminal Boxes



## Good Brands for 4-Core Terminal Boxes



Crafted with sturdy metal, this wall-mountable box guarantees durability and reliability for your network connections. Featuring 1 inlet, 4 outlet, it facilitates seamless connectivity, ensuring smooth data ...



Enhance your network installations with our FTTH 4 Core Termination Box, ...



Premium-Line FTTH distribution box is aim designed for multi-purpose applications in FTTH projects. Read more here!



The 4-core optical fiber distribution box is used for the fusion splicing, splitting, wiring transmission and other functions of the optical transmission terminal. It can effectively terminate, protect and manage ...



Enhance your network installations with our FTTH 4 Core Termination Box, designed for customization. Opt for our OEM service to incorporate your company logo, or select our ODM service to develop ...



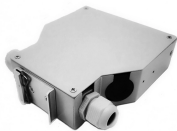
Discover a wide range of high-quality Fiber Optic Products, including termination boxes, splice enclosures, patch panels, and PLC splitters. Perfect for FTTH, telecom, and enterprise networks.



Streamline your electrical projects with reliable terminal box 4 core designed for easy installation and superior connectivity, ensuring optimal performance and safety.



Terminal box is a durable and easy-to-use low-profile connection device. It is suitable for all fiber optic and FTTH application. This box is for outdoor and indoor use. Made from rugged plastic. Termination ...



nVent HOFFMAN provides reliable solutions that are consistently in-stock to help protect electronic or terminal wire connections. Lead Time - View accurate lead times to plan your delivery expectations. ...



Choose from our selection of terminal boxes, including over 4,300 products in a wide range of styles and sizes. Same and Next Day Delivery.



With 4-core capacity and SC adapter compatibility, it is ideal for residential, commercial, and small-scale industrial applications. Its DIN rail mounting ensures easy installation in distribution panels, while its ...

## Contact Us

For more information, pricing, or custom network solutions, please contact us:

Website: <https://hashherbcafe.co.za>

Email: [hello@hashherbcafe.co.za](mailto:hello@hashherbcafe.co.za)

Phone: +27 63 814 7295

Address: 15 Galaxy Road, Linbro Business Park, Johannesburg, 2065, South Africa

This document is for informational purposes only. Specifications subject to change without notice.

