

Gigabit optical port 100Mbps optical module



Gigabit optical port 100Mbps optical module



This means one of such current optical modules, QSFP28 transceivers, can hit up to 100 Gbps speeds with a reach of up to 40 kilometers, making them well-suited for intercontinental and ...



The Cisco QSA Module converts a QSFP28 port to an SFP28, SFP+ or SFP port. This flexibility allows customers a cost-effective transition to high density 100G platforms, while ...



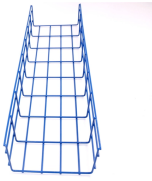
The 100G QSFP28 module solution provides high-performance 100GbE connectivity for data centres, enterprise core & distribution layers, computing networks and ...



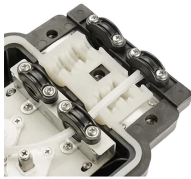
Mellanox® MMA1B00-C100 is a 4-channel, pluggable, QSFP28 optical transceiver, designed for use in 100Gb/s Ethernet. This module incorporates Mellanox integrated circuit technology, in order to ...



The primary feature of the 100M Ethernet Optical Port Chip is its support for a transmission speed of 100 Mbps. This speed is suitable for most small and medium-sized enterprises and home ...



Our QSFP28-SR Multi-Mode-Fiber (MMF) Optical Modules integrate a 12-lane MTP/MPO fiber receptacle (port) for 100G Ethernet links using industry-standard MTP/MPO fiber patch cords up to ...



The OSDSFP100 is an Industrial 100BaseX SFP Plugin Module compliant with IEC60825-1 to be used with Fast Ethernet SFP ports.



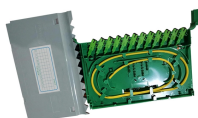
The module converts 4 input channels of 25Gb/s electrical data to 4 channels of CWDM optical signals and then multiplexes them into a single fiber, using a nominal wavelength of 1310nm, for 100Gb/s ...



What are the key features of the Fibrecross 100G QSFP28 SR4 Optical Transceiver? The Fibrecross 100G QSFP28 SR4 module offers 100Gbps data rate, 850nm wavelength, up to 100m reach over ...



GLC-GE-100FX is a Cisco SFP module that lets a Gigabit Ethernet port on a Cisco switch or router carry a 100BASE-FX optical link. A standard 100BASE-SX or 100BASE-LX SFP cannot ...



The 100G QSFP28 module solution provides high-performance 100GbE connectivity for data centres, enterprise core & distribution layers, computing networks and service provider applications.

Contact Us

For more information, pricing, or custom network solutions, please contact us:

Website: <https://hashherbcafe.co.za>

Email: hello@hashherbcafe.co.za

Phone: +27 63 814 7295

Address: 15 Galaxy Road, Linbro Business Park, Johannesburg, 2065, South Africa

This document is for informational purposes only. Specifications subject to change without notice.

