

Gigabit Fiber Router Parameter Settings



Overview

To set up your router for fiber internet quickly, connect the router to your fiber modem, access the router's settings via a web browser, and input the provided ISP credentials. Make sure to update the firmware, configure Wi-Fi security, and customize your network. Learn everything you need to know about the GFiber Wi-Fi 7 Router (GRBE331C), including key features of Wi-Fi 7 technology, security and compatibility options, a step-by-step guide for installation, and technical specifications. The GFiber Wi-Fi 7 Router is built to keep up with everything you do. This module provides basic configuration procedures for the Cisco 800M Series ISR and contains the following sections. To configure the global parameters for your router, follow these steps. Specifies. Recommended QOS/SQM configuration for a gigabit connection?

Based on my hardware and internet connection, I have the following questions: What QOS/SQM package offers the best performance?

What specific configuration is recommended?

HARDWARE AND CONNECTION DETAILS Internet connection type: Fiber. Fiber optic internet keeps getting faster. With. Page 1 TP-Link - TL-WR1043N / TL-WR1043ND 300Mbps Wireless N Gigabit Router - Fiber Setup Guide.

Gigabit Fiber Router Parameter Settings



Thinking of upgrading to 7 Gig speed? You'll want to know how to ...



Step 1: In order for us to login to the web interface we need to determine the router IP address. Please follow the below steps to determine the router address as it may differ from one device to another.



Plug a fiber SFP module into the eth5/SFP port. Connect a fiber optic cable to the fiber SFP module. Then connect the other end of the cable to another fiber device. The EdgeOS® configuration ...



Configuring your router for fiber internet ensures you get the most out of your high-speed connection. By following these detailed steps, you will enjoy faster, more reliable, and secure internet ...



Thinking of upgrading to 7 Gig speed? You'll want to know how to adjust your router settings for optimal Wi-Fi performance.



What specific configuration is recommended?
HARDWARE AND CONNECTION DETAILS. Internet connection type: Fiber (gigabit, half duplex)
Download speed: 1000 mbit. Upload speed: 500 mbit.



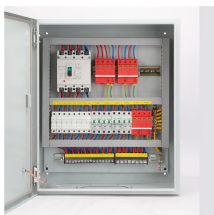
This section displays the status of your router's local network (LAN) and internet connection (WAN), firmware and hardware version numbers, MAC Address, IP settings of Fios Router and Fios ...



The fiber interface has a fixed speed and does not support duplex options, but you can set the interface to negotiate link parameters (the default) or not to negotiate.



To configure Gigabit Ethernet (GE) WAN interfaces, follow these steps, beginning in global configuration mode. Enters global configuration mode. Enters the configuration mode for a Gigabit ...



This section displays the status of your router's local network (LAN) and internet connection (WAN), firmware and hardware version numbers, MAC Address, IP settings of Fios Router and Fios ...



This article provides clear, step-by-step instructions for adjusting the TP-Link Wireless Router's wireless settings (SSID, password, channel, etc.), helping you secure your network and optimize Wi-Fi ...



Learn everything you need to know about the G-Fiber Wi-Fi 7 Router (GRBE331C), including key features of Wi-Fi 7 technology, security and compatibility options, a step-by-step guide for ...

Contact Us

For more information, pricing, or custom network solutions, please contact us:

Website: <https://hashherbcafe.co.za>

Email: hello@hashherbcafe.co.za

Phone: +27 63 814 7295

Address: 15 Galaxy Road, Linbro Business Park, Johannesburg, 2065, South Africa

This document is for informational purposes only. Specifications subject to change without notice.

