

Gateway configuration on aggregation switch



Overview

Configuring port aggregation on a UniFi switch is straightforward using the UniFi Network Controller (or UniFi OS Console). The process involves selecting the ports you wish to combine, creating a new link aggregation group, and assigning the aggregation to the. For maximum throughput in gateway-to-aggregation switch connections, it is recommended to use SFP+. What is the difference between static LAG configurations and LACP?

Static LAG (Link Aggregation Group) Configurations: These require manual configuration on both ends of the link, which can be prone. Core switches set up a CSS that functions as the core of the entire campus network to implement high network reliability and forwarding of a large amount of data. Aggregation switches set up stacks to implement device-level backup and increase the interface density and forwarding bandwidth. A. ip igmp snooping enable name NET_MGMT ip igmp snooping enable name EMPLOYEE_WIRED ip igmp snooping enable name EMPLOYEE_WLAN ip igmp snooping enable name IOT ip igmp snooping enable name GUEST ip igmp snooping enable name REJECT_AUTH ip igmp snooping enable name CRITICAL_AUTH ip igmp

snooping. Port aggregation allows you to group multiple physical ports into one unit. Configure each Ethernet interface in the aggregate interface with the Link aggregation mode property.

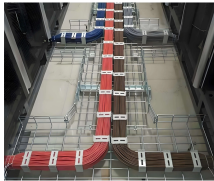
Gateway configuration on aggregation switch



In what order should I configure port aggregation on my switches? You should be certain that configuration changes are first done on the most downstream switch, and then move upstream ...



Port aggregation is useful for implementing load balancing and provides a redundant link backup. To allow port aggregation, the basic configuration on all the ports must be consistent. The following list ...



Configuring port aggregation on a UniFi switch is straightforward using the UniFi Network Controller (or UniFi OS Console). The process involves selecting the ports you wish to combine, ...



The Aggregation Switch Reference Configuration section provides a reference CLI configuration of the aggregation switches as configured previously in this guide.



Learn how to use Link Aggregation between UniFi switches or clients to increase bandwidth and redundancy. Everything you need to know



How to configure link aggregation interfaces. Configure each Ethernet interface in the aggregate interface with the Link aggregation mode property. When enabled, indicates that the Ethernet ...



The workflow for Johnson Controls systems is to use the Metasys IP Network Wizard to develop the switch configuration in the branch office, and then load the configuration onto the switch ...



This setup ensures minimal downtime and increased throughput by aggregating multiple links. When configuring MC-LAG, it is important to properly configure both upstream and downstream devices to ...



In this example, aggregation switches set up stacks that function as gateways for wired and wireless users on the entire network and are responsible for routing and forwarding of user services.



Discover the role of aggregation switches. Explore differences between aggregation, access, and core switches, and choose the right model for your network.

Contact Us

For more information, pricing, or custom network solutions, please contact us:

Website: <https://hashherbcafe.co.za>

Email: hello@hashherbcafe.co.za

Phone: +27 63 814 7295

Address: 15 Galaxy Road, Linbro Business Park, Johannesburg, 2065, South Africa

This document is for informational purposes only. Specifications subject to change without notice.

