

## GPT optical communication equipment



### Overview

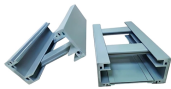
A gigabit passive optical network (G-PON) comprises optical line terminals (OLTs) and optical network units (ONUs), and Murata's lineup of products for use in OLTs is introduced here. Qiao Zhang, Lin Jiang, Jihui Sun, Yan Pan, Jiacheng Feng, Anlin Yi, Wei Pan, Bingjie Xu, and Lianshan Yan Opt. Express 32 (12), 20471-20482 (2024) View: HTML | PDF Yongpeng Zha, Jianxin Ren, Bo Liu, Yaya Mao, Xiangyu Wu, Rahat Ullah, Xiumin Song, Shuadong Chen, Yiming Ma, Feng Wang, and Lilong Zhao. on. GA-EMS' OCTs are facilitating the next evolution of modular, space-based communication services, providing a more resilient architecture to ensure 24/7 total. NVIDIA, a leading AI chip maker, is reported to have supplied around 20,000 graphic processing units (GPUs) to support the development of ChatGPT. Moreover, there are plans for significantly increased GPU usage, with speculation that their upcoming AI model may require as many as 10 million GPUs. About Company : Genuine Optics is world-leading optical transceiver provider. We are committed to bring the most competitive low-power consumption, high-speed. 0 OCT standard 10 W 1530-1565 nm transmit fiber. With the increasing capacity and complexity of optical fiber communication systems, both academic and

industrial requirements for the essential tasks of transmission systems simulation, digital signal processing (DSP) algorithms verification, system performance evaluation, and quality of.

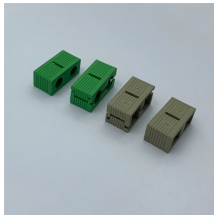
## GPT optical communication equipment



Explore GAOTek's cutting-edge optic communication equipment, offering solutions like GPON and EPON for FTTH and D-CCAP access. Integrating OLT and aggregation switches, our technology ...



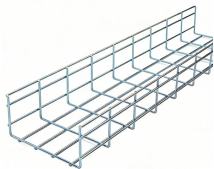
The smaller aperture size required for optical communication relative to conventional RF technology, allows for a smaller, lighter OCT package with the additional benefit of less beam spreading.



About Company : Genuine Optics is world-leading optical transceiver provider. The company is registered in San Jose, California, with new buildout manufactory in Thailand.



In this study, we propose a framework of LLM-empowered optical networks, facilitating intelligent control of the physical layer and efficient interaction with the application layer through an LLM-driven agent ...



A GPT-based versatile research assistant named OptiComm-GPT is proposed for optical fiber communication systems, which flexibly and automatically performs system simulation, DSP ...



GA-EMS" Optical Communication Terminals (OCTs) and Optical Ground Terminals (OGTs) are scalable and adaptable to enable robust, multi-domain communications between space, air, land, and sea, ...



Schematic of OptiComm-GPT for optical fiber communication system, including optical transmission system simulation, DSP algorithms verification, system performance evaluation, and ...



OptiComm-GPT: a GPT-based versatile research assistant for optical fiber communication systems  
Xiaotian Jiang, Min Zhang, Yuchen Song, Yao Zhang, Yidi Wang, Cheng Ju, and Danshi Wang



A gigabit passive optical network (G-PON) comprises optical line terminals (OLTs) and optical network units (ONUs), and Murata's lineup of products for use in OLTs is introduced here.



When it comes to enabling this transition, seeking cabling solutions that can support extensive GPU clusters - whether they comprise 16K or 24K GPUs - is an important part of the ...

## Contact Us

For more information, pricing, or custom network solutions, please contact us:

Website: <https://hashherbcafe.co.za>

Email: [hello@hashherbcafe.co.za](mailto:hello@hashherbcafe.co.za)

Phone: +27 63 814 7295

Address: 15 Galaxy Road, Linbro Business Park, Johannesburg, 2065, South Africa

This document is for informational purposes only. Specifications subject to change without notice.

