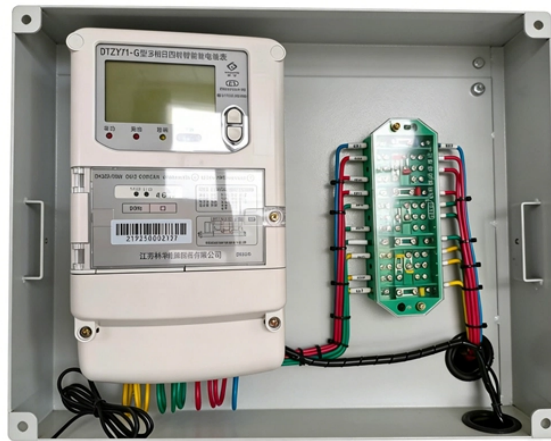


## Fully equipped 24-port SC fiber optic patch panel



## Fully equipped 24-port SC fiber optic patch panel



Teleweaver Fully Loaded Fibre ODF ( Optical Distribution Frame ) 1RU 19" for Rack Mounted is installed with SC FC LC ST fiber optic adapters as per customers requirements.



Our 24 port sliding patch panel comes preloaded with 24 single-mode simplex SC adapters and a fiber management kit (includes 1 PG 13.5 cable gland, 8 bunny clips, 1 splice bridge, 24 fibers strands, ...



Nexconec sliding patch panel accepts 24 adapters SC Duplex or LC Quad within 1U space. The panel can be pre-loaded completely with the required adapters or pre-loaded with pigtails and splice ...



Product Overview Suitable Applications: Fiber Express solution for Backbone, Telecommunication Room, Main Distribution room and Data centers



Infinique Fiber Patch Panels are designed with superior features and provide high density connectivity suitable for datacenters. The panel features include a fully removable tray, improved labeling, cable ...



Description Rack mounted patch panel is designed for fiber connection and distribution of backbone fiber cable; it is suitable for fiber splicing, storage and ...



Description Rack mounted patch panel is designed for fiber connection and distribution of backbone fiber cable; it is suitable for fiber splicing, storage and protection.



Explore fiber patch panels for network infrastructure. Find LC, SC, and ST connector options for your telecommunications or data center needs.



Explore CommScope's efficient and scalable fiber splice panels designed for seamless connectivity. Accommodating LC, SC, and MTP/MPO connectors, these panels are ideal for data centers, ...



This fiber patch panel fits for ST or SC adapter ( dual port), it has the function of splicing, distribution, administration, protection and storage for fiber cables.



The 1U fiber enclosure delivers excellent fiber termination, splicing, and patching management, making it an ideal solution for FTTH, FTTB, data centers, and telecom networks.

## Contact Us

For more information, pricing, or custom network solutions, please contact us:

Website: <https://hashherbcafe.co.za>

Email: [hello@hashherbcafe.co.za](mailto:hello@hashherbcafe.co.za)

Phone: +27 63 814 7295

Address: 15 Galaxy Road, Linbro Business Park, Johannesburg, 2065, South Africa

This document is for informational purposes only. Specifications subject to change without notice.

