

## French electrical distribution box model specifications



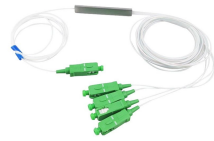
## French electrical distribution box model specifications



TH35x7,5 symmetrical rail in enclosures with one row of modules and a compact frame in enclosures with two or more rows of modules. They are supplied assembled in all references.



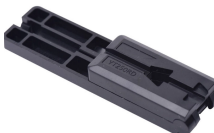
Notre gamme complète pour la distribution d'énergie basse tension et la technique d'installation électrique couvre toutes les exigences, du tableau de distribution à la prise de courant.



To meet all specifications (practices, speed of implementation, ease of maintenance, continuity of service, etc.), Legrand offers three types of solutions: "Standard" distribution, "Optimised" distribution ...



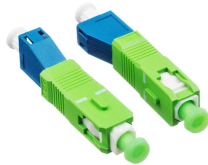
MARECHAL® junction, branch, and distribution boxes: reliable and secure solutions to optimize your professional electrical installations.



Surface-mounted ABS plastic distribution box, for 8/12 modules in line. The distribution box allows the mounting of standard 18mm wide modules.



Designed to manage power supply within 19" server racks or outdoor enclosures, this French type PDU (Power Distribution Unit) features multiple outlets, allowing you to distribute power to a wide variety ...



If you have a specific need or a network with precise technical requirements, Labérine Énergie can configure this Marechal box from A to Z, at your request. We can add more sockets and plugs, add ...



Box are supplied with a DIN rail and without drilled holes as a standard. Please contact us for your specific configurations. 120x120x91, up to two drilled holes per side (M32 max.) 160x160x91, up to ...



Home » Products » Waterproof MCB Distribution Box » PS-56CB » IP66 Waterproof & CE Certified French Standard DB Box with 16A Plug Socket



Versatile Options: Whether you require single-phase or three-phase power, we offer a variety of specifications and configurations to meet the connectivity needs of different electrical equipment.

## Contact Us

For more information, pricing, or custom network solutions, please contact us:

Website: <https://hashherbcafe.co.za>

Email: [hello@hashherbcafe.co.za](mailto:hello@hashherbcafe.co.za)

Phone: +27 63 814 7295

Address: 15 Galaxy Road, Linbro Business Park, Johannesburg, 2065, South Africa

This document is for informational purposes only. Specifications subject to change without notice.

