

French 10 Gigabit Single-Mode Optical Cable



French 10 Gigabit Single-Mode Optical Cable



The XG-SFP-LR-SM1310 is aligned to IEEE 10GBASE-LR optical specifications and supports a link length of up to 10 kilometers over a single-mode fiber (SMF) with an LC connector.



Data Sheet datasheet is intended to guide the user through the various options available when choosing an optic module for a given platform depending on the architecture.



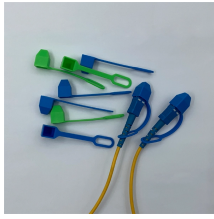
This document outlines the specifications for a single-mode optical fiber and cable designed for use around the 1310 nm zero-dispersion wavelength, suitable for both the 1310 nm and 1550 nm regions, ...



Multi-vendor coding options available for your 10GB Ethernet requirements. Available in Multimode, Single Mode, Extended Range, Long Reach Multi-mode & Copper. In addition to GBICS codable ...



FS 10GbE SFP+ module solutions provide a wide variety of 10 Gigabit Ethernet connectivity options for data centers, enterprise wiring closets, Internet Service Providers (ISPs) applications.



Upgrade networks with our optical transceiver sfp+ 10g single mode module 1310nm 10km lc. This LC transceiver delivers effortless 10km connectivity for data centers and servers.



Cisco SFP+ Active Optical Cables (Figure 5) are direct-attach fiber assemblies with SFP+ connectors. They are suitable for very short distances and offer a cost-effective way to connect within ...



Online shopping. w/24h-delivery, 7Days & Refund Guarantee. CE, RoHS and ISO9001 Certified. SFP+ Cables, QSFP+ Cables, MiniSAS Cables, XFP Cables, CX4 Cables and Fiber Optic Transceivers.



Transmit and receive optical data over SM fiber up to 10 km in an industrial temperature range environment. The SFP supports data rates from 1.25 to 11.3 Gbps. Advanced firmware enables ...



Genuine Amphenol 10GBASE-SR SFP+ Optical Transceiver Modules provide a high-density, high-performance interface for 10-Gigabit Ethernet and Fibre Channel applications.

Contact Us

For more information, pricing, or custom network solutions, please contact us:

Website: <https://hashherbcafe.co.za>

Email: hello@hashherbcafe.co.za

Phone: +27 63 814 7295

Address: 15 Galaxy Road, Linbro Business Park, Johannesburg, 2065, South Africa

This document is for informational purposes only. Specifications subject to change without notice.

