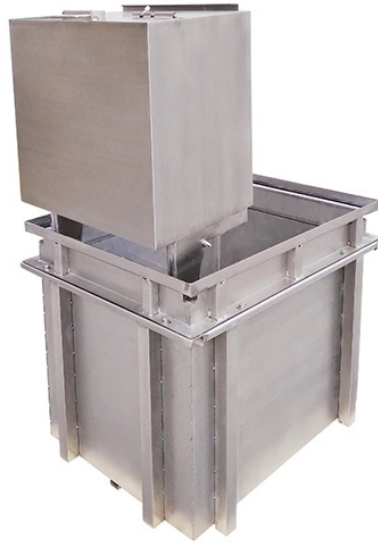


## Fixing method of cable tray cover plate



### Overview

Whether you are using bolts, clips, or welding methods, choosing the appropriate installation method for your system is critical. This guide highlights the key aspects of the installation process, from preparation to securing the covers, ensuring your installation is both. There are five common ways to fix the cover plate of cable tray elbow supplier: pressing plate fixing, screwing fastening, clasping fixing, padlock fixing and seven-shaped buckle fixing. The main contents. These instructions are based on the standards valid at the time of compilation (12/2023). We will not accept any warranty claims for damage caused through non-observance of these instructions. 300mm Cable Tray Hanging & T-Joint Fixing in 60 Sec! #CableTrayInstallation "#cabletray #cablebox Learn the fastest way to hang & fix a 300mm cable tray T-joint! Perfect for electricians & engineers. A rung spacing of 6 to 9 inches (150 to 230 mm) is preferable when.

## Fixing method of cable tray cover plate



Discover measures for secure Cable Tray Covers Installation. Learn about preparation, installation steps, and fixing methods to ensure stability and durability.



Learn the fastest way to hang & fix a 300mm cable tray T-joint! Perfect for electricians & engineers. [↩ ...more](#)



Discover the best fixing and mounting options for cable trays and wire mesh basket trays. CMW shares tips for efficient cable management.



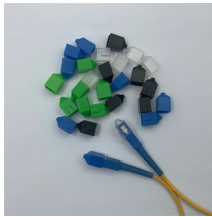
Instead of large conduits, cable channel may be used very effectively to support cable drops from the cable tray run to the equipment or device being serviced and is ideal for cable tray runs involving a ...



Per NEMA V2, installing cover on outdoor cable tray systems is not common practice. Should they be required, proper attachment is required to protect them from the force of the wind.



The choice of method should be discussed with a local inspector. The best decision may be to extend only the cables, creating a discontinuity in the cable tray.



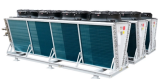
**COVER INSTRUCTIONS:** ) Use to enclose cable tray and protect cable and wiring from damage or debris. ) Provided with self-tapping tek screws to mount into siderails. eaked, diamond plate, and ...



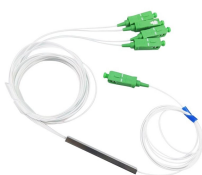
All the cable trays and trunking covers shall be secured with proper clamps or screws fixed with supports. Ensure the gaps between the trays which are mounted in ...



To avoid transverse bending at higher loads, a joint plate must be used for tray widths of 400 mm or more in the joint area of the cable trays that are to be connected.



Buckle fixing method cable tray cover plate does not need to be punched, and the cover plate and tray are fixed together by bending folds at both ends of the buckle, and the fixing strength ...



Some applications may require the cable tray to support the weight of a single, dead object in addition to the cable loads. Specifications typically require this to be applied at the midpoint of the span between ...



The document provides installation guidelines for GRP/FRP Mita Flex cable ladder and tray systems, detailing various components and their proper installation ...

## Contact Us

For more information, pricing, or custom network solutions, please contact us:

Website: <https://hashherbcafe.co.za>

Email: [hello@hashherbcafe.co.za](mailto:hello@hashherbcafe.co.za)

Phone: +27 63 814 7295

Address: 15 Galaxy Road, Linbro Business Park, Johannesburg, 2065, South Africa

This document is for informational purposes only. Specifications subject to change without notice.

