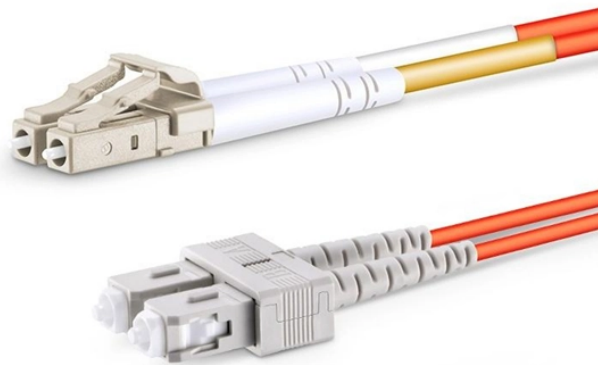


## Fiji optical transmitter 100G



## Fiji optical transmitter 100G



The 100G QSFP28 CWDM4 2KM LC Optical Transceiver from Fibconet is a high-performance solution for high-speed data transmission. With remarkable capabilities, QSFP28 Transceiver providing a ...



Extreme Compatible 100G BiDi QSFP28 optical transceiver, with low power consumption, provides a seamless upgrade from 10G-100G of the lowest infrastructure costs.



applications. This module contains 4-lane optical transmitter, 4-lane optical receiver and module management block including 2 wire serial interface. The optical signals are multiplexed to a single ...



The QSFP28-DXX-ZR1 optical transceiver module supports 100G Ethernet transmission over distances up to 80 kilometers using DWDM PAM4 ZR technology on single-mode fiber.



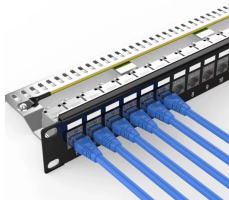
AOI's vertically integrated design and manufacturing capabilities enable the production of 100G VCSELs at 850nm, the industry's preferred solution for short-reach connections under 100 meters in ...



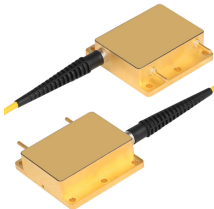
This QSFP28 PSM4 module delivers 104Gbps over 2km via quad 26Gbps channels. Featuring 1310nm DFB laser arrays and MPO connectivity, it maximizes port density while reducing TCO for 100G ...



GIGALIGHT 100G QSFP28 LR4 optical modules are used for long-distance transmission in the datacom or telecom field and are compliant with IEEE 802.3ba 100GBASE-LR4 Ethernet transmission ...



100G Transceivers by JTOPTICS deliver high-speed optical data transmission and are ideal for data centers, enterprise networks, and telecom applications. Engineered for reliability and scalability, ...



Explore the details, specifications and video of our 100G Optical Transceiver, and order high-quality 100G Optical Transceiver from our factory directly at competitive pricing.



The 100G QSFP28 LR4 optical module is a high-speed optical transceiver compliant with the IEEE 802.3ba standard, specifically designed for long-distance 100G Ethernet transmission. It operates in ...

## Contact Us

For more information, pricing, or custom network solutions, please contact us:

Website: <https://hashherbcafe.co.za>

Email: [hello@hashherbcafe.co.za](mailto:hello@hashherbcafe.co.za)

Phone: +27 63 814 7295

Address: 15 Galaxy Road, Linbro Business Park, Johannesburg, 2065, South Africa

This document is for informational purposes only. Specifications subject to change without notice.

