

## Fiber optic patch panel specifications number of ports



## Fiber optic patch panel specifications number of ports



PRODUCT PACKAGING • Panels are individually boxed complete with the internal cable management kit as standard.



Fiber patch panel cutout fiber adapter plates (SC simplex SC duplex LC simplex LC duplex LC quad ST,FC,ST 12 ports and 24 ports) can be used for in-field fiber optic installations and can be used with ...



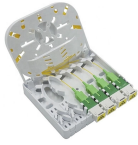
A range of single-unit frame and panel solutions for fiber splicing, adapters, connectors and multi-facility cable interconnections that protect fiber optic connections from damage.



CommScope's FPX series fiber panels are available to be shipped with factory installed adapter packs and/or preterminated pigtail assemblies which simplifies the ordering process and reduces ...



Simplify connections and cable management with our versatile selection of fiber optic patch panels and fiber patch panel adapters. Available in a wide range of customizable options, our fiber patch panels ...



Patch Panel is a long-term solution that can provide high-density port connectivity solutions for 4x10 Gbps, 100 Gbps, 2x100 Gbps, 4x100 Gbps, 400 Gbps, 2x400 Gbps, and 4x400 ...



The Fiber Optic Patch Panels UHD ORMP 1U and UHD ORMP 2U are pre-assembled according to customers' exact specifications to begin splicing right out of the carton, so the panels provide ...



Fiber patch panels tend to have a number of ports that is some multiple of twelve. Common configurations include 12-port patch panels, 24-port patch panels, 48-port models, 72-port models, all ...



Consolidate your fiber optic connections in industrial environments with our DIN rail patch panel, with a modular design and tool-free installation save space and simplify deployment.



Fiber optic patch panels and ODF units. 12-288 port rack mount, wall mount & sliding types. Pre-loaded or empty chassis.

## Contact Us

For more information, pricing, or custom network solutions, please contact us:

Website: <https://hashherbcafe.co.za>

Email: [hello@hashherbcafe.co.za](mailto:hello@hashherbcafe.co.za)

Phone: +27 63 814 7295

Address: 15 Galaxy Road, Linbro Business Park, Johannesburg, 2065, South Africa

This document is for informational purposes only. Specifications subject to change without notice.

