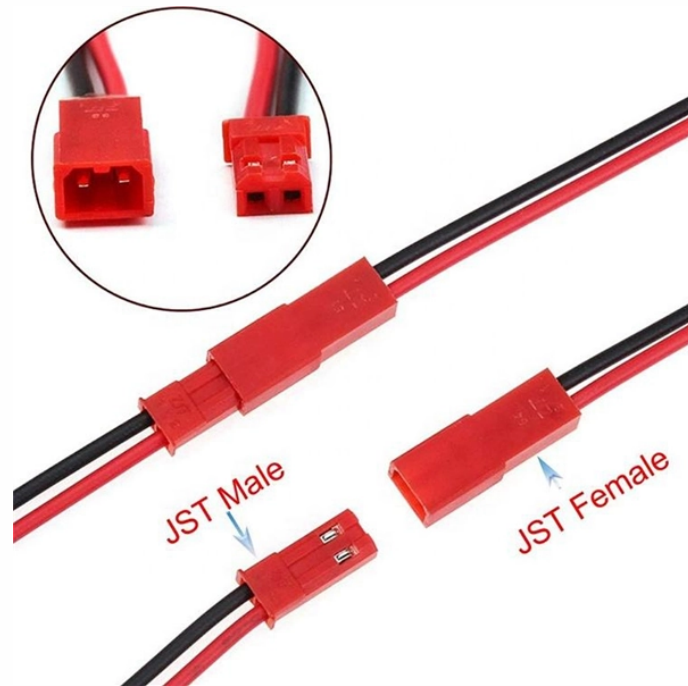


Fiber optic patch cord plugged in tightly but not working



Overview

By following the steps outlined in this guide—starting with a visual inspection, verifying the alignment, and switching the patch cables—you can quickly troubleshoot and resolve most fiber optic connection issues. Fiber optic patch cords are often treated as low-risk consumables, yet a large percentage of optical link failures originate at the patch cord level. Unlike backbone cables, patch cords are frequently connected, disconnected, bent, and handled by technicians, making them the most vulnerable. Whether you're a seasoned network engineer or a first-time installer, you'll learn the systematic approach that separates guessing from diagnosing—and gets your network back online fast. Start with the Basics: The 5-Minute Checklist Before you reach for advanced diagnostic tools or start. Fiber optic cables are a vital component of modern communication networks, offering high-speed data transmission and reliability. In this comprehensive guide, we'll explore common. A well-built fiber link rarely fails, but when it does the symptoms can be short, confusing, and expensive to chase. This guide lists the actual, field-proven problems technicians encounter most often and gives step-by-step troubleshooting actions you can copy into your maintenance routine. Before diving into

solutions, it's crucial to understand what an optical cable is and how it works. Think of fiber like your teeth — just because it doesn't hurt doesn't mean.

Fiber optic patch cord plugged in tightly but not working



A well-built fiber link rarely fails, but when it does the symptoms can be short, confusing, and expensive to chase. This guide lists the actual, field-proven ...



A well-built fiber link rarely fails, but when it does the symptoms can be short, confusing, and expensive to chase. This guide lists the actual, field-proven problems technicians encounter most often and ...



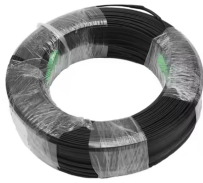
Engineering analysis of common fiber optic patch cord failures, covering root causes, symptoms, and prevention strategies in FTTH and data center networks.



Solution: - Inspect the fiber for bends or kinks, especially near connectors and splices. - If the fiber is excessively damaged, replacing the affected section may be necessary. - Check ...



Are cables actually plugged in? It sounds obvious, but cables get kicked loose, especially in high-traffic areas or when equipment is moved for cleaning. Are cables plugged into the correct ...



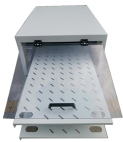
By understanding the symptoms, causes, and solutions for ...



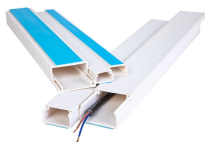
Learn easy, practical tips to maintain your FTTH drop cables, prevent signal loss, and troubleshoot fiber faults quickly. Discover how regular checks and proper storage keep your fiber ...



Solving fiber optic cable issues doesn't have to be a mystery. By understanding the most common problems and how to fix them, you can keep your network (and your sanity) intact.



By following these steps, you can systematically troubleshoot common issues with single-mode fiber patch cables and ensure optimal performance of your fiber optic network.



By understanding the symptoms, causes, and solutions for common fibre optic cable issues, network administrators and technicians can effectively diagnose and troubleshoot problems ...



This article will guide you through the process of troubleshooting fiber optic connections, with a focus on ensuring proper TX and RX alignment and how to correctly switch patch cables to ...



Don't let cable woes ruin your streaming binge or video conference; instead, explore these six proven ways to troubleshoot and fix your optical cable issues. Understanding Your Optical ...

Contact Us

For more information, pricing, or custom network solutions, please contact us:

Website: <https://hashherbcafe.co.za>

Email: hello@hashherbcafe.co.za

Phone: +27 63 814 7295

Address: 15 Galaxy Road, Linbro Business Park, Johannesburg, 2065, South Africa

This document is for informational purposes only. Specifications subject to change without notice.

