

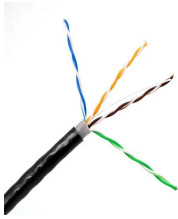
# **Fiber optic cable straight-line laying interval**



## Fiber optic cable straight-line laying interval



Unless directed by the owner or other agency that unused cables are reserved for future use, remove abandoned optical fiber cable (cable that is not terminated at equipment other than a connector and ...



The information contained in this manual should serve as a guide to proper handling, installing, testing, and for troubleshooting problems with fiber optic cables.



Outside plant cables often span distances longer than the limits of manufactured cables (5-15 km typically), Deploying cables of lengths >5km can be difficult, so cables may need to be spliced to ...



Fiber optic cable should not be coiled in a continuous direction except for lengths of 100 ft (30 m) or less. The preferred size for the figure-eight coil is about 15 ft (4.5 m) in length, with each loop 5 ft (1.5 m) ...



All fiber optic cables have specifications that must not be exceeded during installation to prevent irreparable damage to the cable. This includes pulling ...



This document provides guidelines for laying optical fibre cables, including detailed surveying the cable route, soil categorization, recommended pipe types for cable protection, ...



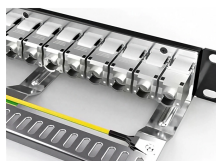
In order to effectively pull cable without damaging the fiber, it is necessary to identify the strength material and fiber location within the cable. Then, use the method of attachment that pulls most ...



A fiber optic cable should be tested three separate times during an installation: on the reel, the splicing test, and the final acceptance test. Extreme caution should be observed when performing an aerial ...



Some key considerations for installing optical fiber cable are highlighted below. Failure to follow these guidelines may result in damage or attenuation increases of the optical fiber or cable.



Fiber optic cable sequential numbers are required at each pole location and vault wall. Sequential numbers will identify conduit length, and slack left in vaults and at poles.



Estimate fiber distance from measured timing, fiber type, and slack with this calculator. Compare spans, delay, and install length now.

## Contact Us

For more information, pricing, or custom network solutions, please contact us:

Website: <https://hashherbcafe.co.za>

Email: [hello@hashherbcafe.co.za](mailto:hello@hashherbcafe.co.za)

Phone: +27 63 814 7295

Address: 15 Galaxy Road, Linbro Business Park, Johannesburg, 2065, South Africa

This document is for informational purposes only. Specifications subject to change without notice.

