

## Fiber distribution box used as a terminal box



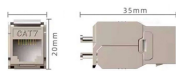
## Fiber distribution box used as a terminal box



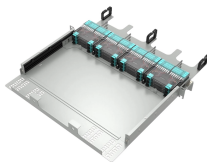
FTTH Terminal Box Fiber Optic Distribution Box  
Fiber to the home (FTTH) ...



A termination box is a distribution box specially designed for the management of ...



Fiber Optic Termination Box is used in the end termination of drop cables in residential buildings and villas, to fix and splice with pigtails. UnitekFiber supplies various type of fiber Optic termination box ...



Fiber Optic Termination Box is used in the end termination of drop cables in residential buildings and villas, to fix and splice with pigtails. UnitekFiber supplies ...



Fiber Distribution Box & Terminal Box manufacturer. Fiber Distribution Box are used in cross-connection (indoor and outdoor devices). They are available in 8.12.16.24.48.144.288 core catering various ...



This article delves into the key differences between a terminal box and a distribution box, providing an in-depth understanding of their functions, applications, and importance in...



Fiber Distribution Box & Terminal Box manufacturer. Fiber Distribution Box are used in cross-connection (indoor and outdoor devices). They are available in ...



FTTH Terminal Box Fiber Optic Distribution Box  
Fiber to the home (FTTH) infrastructures make network organizers adopt powerful management and planning systems, FTTH termination box and Fiber ...



A fiber terminal box, also known as a fiber distribution box, is a device used in fiber-optic communication networks to terminate, splice, and distribute optical fibers. It is a small enclosure that ...



CommScope wall boxes offer efficient fiber connectivity. Easy installation, versatile sizes, and superior cable management.



A termination box is a distribution box specially designed for the management of fiber cables. Its core use is to terminate fiber optic cables and connect the cable's core and pigtail. The typical termination ...



A Fiber Access Terminal (FAT), also known as a Fiber Access Terminal Box (ATB) or Fiber Distribution Terminal (FDT), is a key component found in optimized fiber optic access networks for ...



A fiber optic distribution box, also known as a fiber optic terminal box or fiber optic termination box, is a device used to connect and manage fiber optic cables in a network.

## Contact Us

For more information, pricing, or custom network solutions, please contact us:

Website: <https://hashherbcafe.co.za>

Email: [hello@hashherbcafe.co.za](mailto:hello@hashherbcafe.co.za)

Phone: +27 63 814 7295

Address: 15 Galaxy Road, Linbro Business Park, Johannesburg, 2065, South Africa

This document is for informational purposes only. Specifications subject to change without notice.

