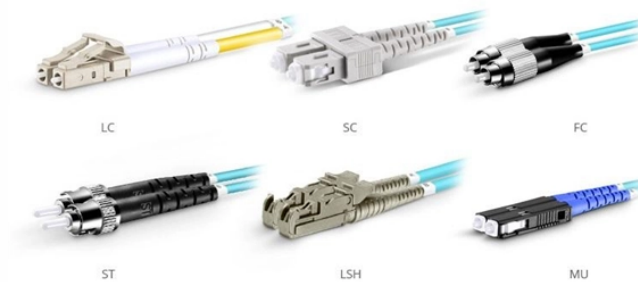


Fiber Optic Cable Splice Box Company



OM3 Fiber Patch Cable Family

Overview

Different networks have different needs when it comes to fiber optic joint closures. At Multilink, we have a variety of closures to meet these needs, including inline types and drop terminals.



Fiber Optic Cable Splice Box Company



Our technicians are experienced in single and mass fusion splicing as well as mechanical, terminations, connectorization and polishing.



ABS offers a complete line of optical splice closures for any application as well as a range of splitters and components. With aerial, pole, wall mount, pedestal and below grade options, ABS fiber splice ...



Explore reliable optical fiber splice closures for network deployment. Our closures prioritize reliability, installability, and flexibility.



ProSplice offers fiber installation, splicing, repair, emergency restoration, DOT traffic control, project management and design/contract consulting to help optimize your network infrastructure.



Fiber optic splice enclosures made in the USA are ideal for Campus LANs, Data Centers and Entrance Facilities, a complete and fully accessible fiber closure solution.



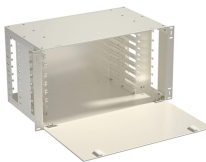
The inline enclosure comes in various models that cater to different fiber types like loose tube or ribbon slot fiber cable and the numbers of fiber cores to be spliced. It usually comes with good ingress ...



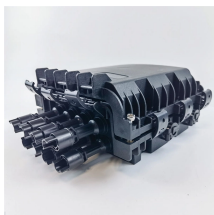
AFL offers robust fiber optic splice closures—including Apex® high-density and LightGuard® weathertight and sealed models—for above-ground, aerial, and buried applications.



Get Fiber Optic Closures from Multilink. We have custom developed and standard terminals for fast and effective hookup and disconnect. Get a free quote today!



Fiber splice boxes from Amphenol Network Solutions are designed for splice-only applications. They are suited for optical cable splice collection points for DAS, MTU and MDU.



Splice boxes ensure continuously reliable real-time data transmission. With their compact and uniform design, the splice boxes for both the DIN rail and 19" mounting provide ample interior space for the ...

Contact Us

For more information, pricing, or custom network solutions, please contact us:

Website: <https://hashherbcafe.co.za>

Email: hello@hashherbcafe.co.za

Phone: +27 63 814 7295

Address: 15 Galaxy Road, Linbro Business Park, Johannesburg, 2065, South Africa

This document is for informational purposes only. Specifications subject to change without notice.

