

## Fiber Optic Cable Re-lay



## Fiber Optic Cable Re-lay



This makes the CCF series very powerful dry relay/contact closure over fiber units. The FRM220-CCF20 contact closure fiber converter provides the transmission of contact closure over a single fiber optic link.



Fiber Repeaters are used to extend and repeat Ethernet data signals over multimode or single mode fiber up to 160km [100 miles]. If you need to convert Single Mode to Multimode, or extend a ...



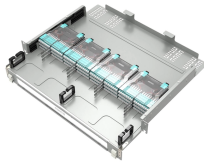
SEL manufactures high-quality fiber optic, ethernet, coaxial, and other cables and accessories. Sized to order and quality tested for reliability and operation.



Overview The FOI-2990 series provide electrical isolation and extension of control signals and relay closures. Multimode optics on the units can extend the distance to 2km. The units can be used in ...



The Digital fiber optic link is a low cost solution for sending control signals using an optical fiber. The product is designed for industrial contact closure applications



The Contact Closure Output (RX) device has 8 output relays with normally closed and normally open terminals available for each relay. Each unit features an NC/NO alarm contact for system status ...



The Thor Fiber Contact Closure over Fiber Converter enables reliable transmission of dry contact (relay), GPIO, and alarm signals over long distances using fiber optic cable. This system converts ...



The FOI-2991, FOI-2992, FOI-2993, FOI-2994, FOI-29995 and FOI-2996 all provide complete electrical isolation for control signals and relay closures. The units are uni-directional devices with the FOI ...



(Broadband Properties Magazine) CERTIFIED TECH SUPPORT: To help you in product selection & fiber installation concepts, all of our Sales Technicians and Support Personnel are Certified Fiber ...

## Contact Us

For more information, pricing, or custom network solutions, please contact us:

Website: <https://hashherbcafe.co.za>

Email: [hello@hashherbcafe.co.za](mailto:hello@hashherbcafe.co.za)

Phone: +27 63 814 7295

Address: 15 Galaxy Road, Linbro Business Park, Johannesburg, 2065, South Africa

This document is for informational purposes only. Specifications subject to change without notice.

