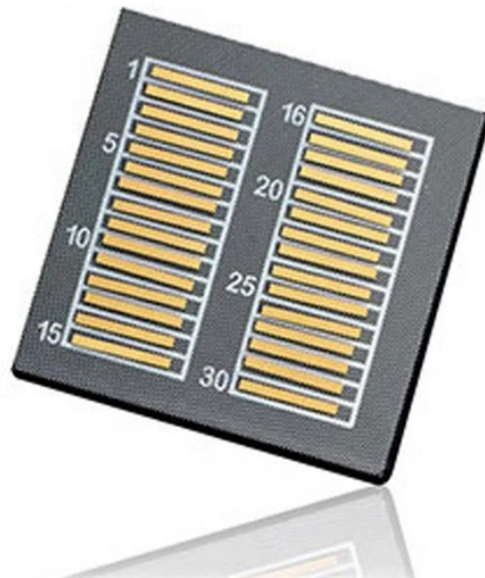


Fiber Optic Cable Indicator Light



Fiber Optic Cable Indicator Light



Visual Fault Locator 30KM - VFL Fiber Optic Tester Kit Include Single Mode 9/125um FC Male to LC Female Adapter, Fiber Optic Lights for Network Cable (Battery not Included)



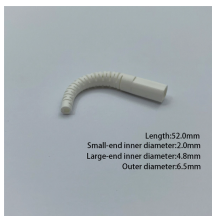
The Miller Live Fiber Identifier is the only tool you need to quickly identify the direction of traffic and relative core power without any damage to the fiber itself.



The Corning Cable Systems VFL-350 Visual Fault Locator / Light Source is used to check single-mode and multimode optical fiber cables and components for faults or to locate individual fibers in a bundle.



Light generated by these units will escape from sharp bends and breaks in jacketed or bare fibers, as well as poorly-mated connectors. They can quickly identify faults in fiber optic jumper cables, ...



A sleeved all-plastic, non-conductive fiber-optic cable passes light from the electronics housing to the separately mounted 30mm diameter display. Whenever AC or DC voltage is above detection ...



A hand-held, battery-powered tool, the VFF5 projects a highly visible red light into a fiber optic cable. The VFF5 is used to check continuity of cabling between termination points and to locate bends or ...



OFIs are simply clamped onto a fiber, where they induce a safe macro-bend and allow a small amount of light to escape. Units use this light to detect the presence of network traffic, test tones or CW signals ...



Want to quickly verify fiber activity, polarity, and connectivity without spending thousands? Now you can for less than \$200. Check out the FiberLert.



A VFL is used to detect faults, breaks, or bends in fiber optic cables by emitting a bright red light that is visible even through the fiber's jacket. It's a cost-effective and straightforward tool, ...



A light and tone will indicate an active fiber (850 nm to 1625 nm). Because its detector operates without contact, FiberLert reduces the risk of contamination and damage, so it can also safely verify ...

Contact Us

For more information, pricing, or custom network solutions, please contact us:

Website: <https://hashherbcafe.co.za>

Email: hello@hashherbcafe.co.za

Phone: +27 63 814 7295

Address: 15 Galaxy Road, Linbro Business Park, Johannesburg, 2065, South Africa

This document is for informational purposes only. Specifications subject to change without notice.

