

Fiber Optic Cable Fixation Inside Handhole



MPO-MPO Low Smoke Halogen Free Sheath

Multimode 10 Gigabit 24 pole OM3

Insertion loss <0.35dB Return loss >50dB



Fiber Optic Cable Fixation Inside Handhole



Introduction Review Of Fiber Optic Technology. Project Preparation And Guidelines. Underground Cable Construction. Underground Cable Installation. Aerial Cable Installation. Completing Outside Cable ...



Meanwhile, get rid of the stuffing to separate fiber core and clean them. Form a ring with the diameter of 100mm or so and fix it on the fiber temporarily by adhesive tape.



Innerducts should enter the handhole near the corners so that the full width of the handhole can be used to coil the cable. Before cable installation, the inner ducts ...



Specially designed for splicing and distributing fiber optic cables, these handholes include internal brackets or racks to manage slack loops and fiber enclosures.



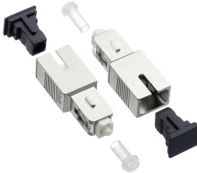
Fiber splice locations with reflections are not acceptable and will be rejected. This does not include connectors used during testing, jumpers at panels, or patch panel ports.



This practice describes the basic guidelines for the proper sizing of handholes for use with fiber optic cable. The document is intended for personnel with prior experience in planning, engineering, or ...



Master strategic handhole placement for rural fiber builds. Expert guidance on positioning, installation, and maintenance for reliable network infrastructure.



Fiber optic cable which passes through manholes containing petroleum-based waste will require special protection. Some petroleum products will deteriorate the cable's polyethylene sheath.



Check whether the main components and accessories have been well prepared inside the package. Open the closure Unscrew fixing bolts and open the closure by lifting the unscrewed bolts with no ...



In some applications it may be desirable to store the cable coil on a diagonal rather than store it flat on the bottom of the handhole. Using the diagonal space in the handhole may allow the use of smaller, ...



5.9.6 Multi-functional fiber optic splice closure can be used for wall-mounting and pole-mounting application. It saves the cost for FTTH application and improve quality of telecommunication.



PPC's cylindrical and rectangular fiber handhole assemblies are designed for subsurface Fiber to the "x" (FTTx) applications in light-duty outdoor environments.



Innerducts should enter the handhole near the corners so that the full width of the handhole can be used to coil the cable. Before cable installation, the inner ducts should be trimmed as necessary to ...



Introduction Review Of Fiber Optic Technology. Project Preparation And Guidelines. Underground Cable Construction. Underground Cable Installation. Aerial Cable ...

Contact Us

For more information, pricing, or custom network solutions, please contact us:

Website: <https://hashherbcafe.co.za>

Email: hello@hashherbcafe.co.za

Phone: +27 63 814 7295

Address: 15 Galaxy Road, Linbro Business Park, Johannesburg, 2065, South Africa

This document is for informational purposes only. Specifications subject to change without notice.

