

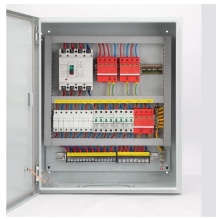
## Fiber Optic Cable Engineering for Monitoring Systems



## Fiber Optic Cable Engineering for Monitoring Systems



In recent years, the occurrence of fiber optic cable damage due to external breakage and other factors has become increasingly common. However, traditional fibre.



Sensor lines" telecom cable monitoring solution performs continuous spatial and temporal measurements and provides real-time accurate data on the cable fatigue, its potential optical losses, ...



With extensive experience in system qualification, technical project execution, and the practical deployment of distributed fiber optic sensing solutions, Uwe has overseen countless sensor cable ...



This study examines the process of monitoring the technical condition of fiber-optic cables based on the recording and analysis of changes in the pixel structure of the optical spot formed...



The most prevalent sensing technology for structure monitoring applications is DSS, which monitors strain related to mechanical loads of structures. Cables for DSS must be designed and installed in a ...



This paper reviews the fiber optic sensors that have been developed and applied to measure cable forces, including fiber Bragg grating, interferometer, and fully distributed sensors.



The applications of such system to achieve ocean wave analysis, seismic monitoring and ship detection with submarine optical fiber cables are discussed to illustrate the practical application of fiber-optic ...



Enviro Structural Monitoring supports the integration of Fiber Optic Sensing Systems into new and legacy infrastructure. We help clients future-proof their monitoring capabilities through robust ...



Measurement of cable forces by using point and distributed fiber optic sensors is reviewed. Fiber optic sensors measure the cable force along cable length in construction and operation. ...



We are integrators of fiber optic monitoring solutions: we supply equipment, install and certificate the fiber optic cables and continue with the start-up and connection of the solutions with your server, ...

## Contact Us

For more information, pricing, or custom network solutions, please contact us:

Website: <https://hashherbcafe.co.za>

Email: [hello@hashherbcafe.co.za](mailto:hello@hashherbcafe.co.za)

Phone: +27 63 814 7295

Address: 15 Galaxy Road, Linbro Business Park, Johannesburg, 2065, South Africa

This document is for informational purposes only. Specifications subject to change without notice.

