

Fiber Optic Cable Engineering Survey Plan

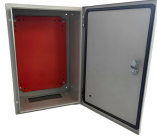


Overview

The installation of fiber optic infrastructure requires detailed fiber optic route survey drawings that describe the type of communication systems required, the geographic layout, the transmission equipment to be used, and the required fiber optics network, as well as terrain. The installation of fiber optic infrastructure requires detailed fiber optic route survey drawings that describe the type of communication systems required, the geographic layout, the transmission equipment to be used, and the required fiber optics network, as well as terrain. The installation of fiber optic infrastructure requires detailed fiber optic route survey drawings that describe the type of communication systems required, the geographic layout, the transmission equipment to be used, and the required fiber optics network, as well as terrain details, obstacles. Our expert OSP Network Designers in FTTH, FTTx designs and standards enables us to provide top quality services to EPC companies all over the world. For New Network builds, we have experience ranging from Single and Multi-dwelling Units, Commercial Units FTTH Fibre-to-the-Home networks, Outside. • Determine the most feasible and cost-effective route for laying the ducts and fibre optic cables. Consider factors such as terrain, existing

infrastructure, right-of-way permissions, and potential for future expansion. However, before a single trench is dug or a cable is laid, there's a crucial first step that often determines the entire project's success or failure: Fiber optic network design refers to the specialized processes leading to a successful installation and operation of a fiber optic network. It includes first determining the type of communication system (s) which will be carried over the network, the geographic layout (premises, campus, outside). Whether you are implementing or upgrading your existing network, our experienced surveyors and skilled team are capable of planning and designing Fibre Optic Cable Networks with high standard workmanship. Explore how Maribumi can provide extraordinary value for your customers and business.

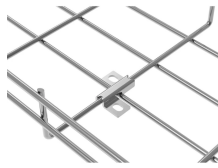
Fiber Optic Cable Engineering Survey Plan



Fiber is found in plant-based foods, particularly beans, nuts, fruits, and vegetables. Fiber has many health benefits, including reducing risk of cardiovascular disease, type 2 diabetes, and ...



Fiber is a carbohydrate found in fruits, vegetables and grains that regulates your digestive system, lowers cholesterol and helps you stay full longer.



What are the 10 best foods for fiber? Some top choices to add to the diet are chickpeas, lentils, split peas, oats, apples, pears, almonds, chia seeds, Brussels sprouts, and avocado.



Fiber is a type of carbohydrate that the body can't digest. Though most carbohydrates are broken down into sugar molecules called glucose, fiber cannot be broken down into sugar molecules, and instead ...



Fiber is the general name for certain carbohydrates -- usually parts of vegetables, plants, and grains -- that the body can't fully digest. While fiber isn't broken down and absorbed like...



Whether you are implementing or upgrading your existing network, our experienced surveyors and skilled team are capable of planning and designing Fibre Optic Cable Networks with high standard ...



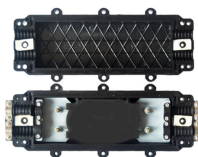
Design Presentation provides the expertise needed in construction plans for trenching, coupling, backfilling, fiber optic cable pulling, and fiber optic cable termination.



The document outlines 10 stages of a fiber optic cable installation project: 1. Proposed route survey using GPS and mapping software. 2. Drafting an AutoCAD drawing of the survey. 3. Trenching ...



Fiber optic network design involves the planning, routing, and drafting of Fiber cable layouts to support high-speed data transmission. It includes detailed mapping of backbone, distribution, and drop ...



ArcGIS Designs for the area in need of fiber optic cable. A field engineer will go to the requested fiber optic cable location and survey the area for our design engineers.



This work plan focuses on the surveying and GIS component of the project, with special emphasis on the equipment required for fieldwork, data processing, and GIS analysis.



If the goal is to add more fiber to your diet, there are lots of great options. Fruits, vegetables, grains, beans, peas and lentils all help you reach that daily fiber goal.



You should record the specifications on every cable and fiber: the manufacturer, the type of cable and fiber, how many fibers, cable construction type, estimated length, and installation technique (buried, ...



Learn how fiber optic network construction works—from site survey and permits to aerial vs underground fiber cable installation, splicing, and FTTH connections.



Get the facts on dietary fiber foods (soluble, insoluble), high-fiber foods, its health benefits (weight loss), and why it's important to get your daily intake of fiber.



Eat more fiber with six easy expert tips for daily gut health and digestion. Learn simple ways to add fiber to your diet, including foods and habits to try.



Incorporating these detailed sections into your fiber optic cable install site survey template ensures that you're not just checking boxes but actively building a comprehensive ...



- Create a detailed network design plan that includes the layout of the ducting, fibre optic cables, splice locations, distribution points, and any necessary network components such as splitters and or ...



Top fiber internet providers include AT& T, Google Fiber, Quantum Fiber and Verizon Fios. Fiber plans start at \$29.99/mo. with Frontier Fiber.

Contact Us

For more information, pricing, or custom network solutions, please contact us:

Website: <https://hashherbcafe.co.za>

Email: hello@hashherbcafe.co.za

Phone: +27 63 814 7295

Address: 15 Galaxy Road, Linbro Business Park, Johannesburg, 2065, South Africa

This document is for informational purposes only. Specifications subject to change without notice.

