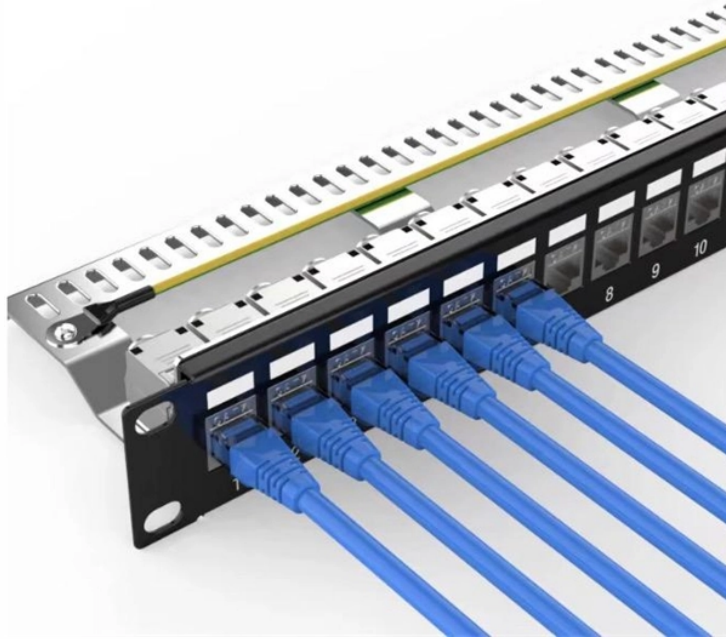


## FTTR Information Panel 800mm Deep Warranty



## FTTR Information Panel 800mm Deep Warranty



Great for 230V IT environments, this standard-depth 47U server rack is 800 mm wide to support cable management and PDU mounting on the sides.



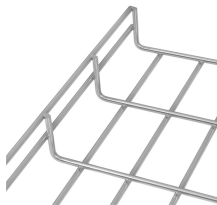
FTTR extends fiber from the home gateway into every room, delivering fast, reliable, and future-proof connectivity with an enterprise-grade home network experience.



Every effort has been made in the preparation of this document to ensure accuracy of the contents, but all statements, information, and recommendations in this document do not constitute a warranty of ...



Great for 230V IT environments, this standard-depth 47U server rack is 800 mm ...



Huawei OptiXstar V261a-20 is a main FTTR for the Huawei iFTTR OptiXstar F50 Plus. It uses the GPON and Wi-Fi 7 technologies to implement ultra-broadband access with high performance and wide ...



ZTE FTTR uses the all-optical gateway for home networking over optical fibers. It supports expansion to one main ONT +16 room ONTs, and works with the self-developed intelligent roaming algorithm to ...



The Huawei FTTR solution uses dedicated pipe routing tools, innovative micro optical cables, and transparent optical cables, which are easy to be routed through pipes without fiber splicing.



The information in this document may contain predictive statement including, without limitation, statements regarding the future financial and operating results, future product portfolios, new ...



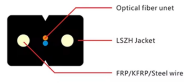
It consists of three components: the Master FTTR Unit (Main FTTR Unit, MFU), Slave FTTR Units (Sub FTTR Units, SFUs), and an indoor optical distribution network (ODN). It also provides terminal ...



The warranty coverages are determined by the mileage of the vehicle and the number of years from the delivery date. The warranty coverages are limited by whichever occurs first.



The Owner's Manual for this vehicle contains warnings, instructions and other information you must read and fully understand before safely riding or performing maintenance on this vehicle.



New Vehicle Warranty Booklet. ROADSIDE ASSISTANCE Isuzu F-Series Diesel trucks are built to be the highest quality, most reliable trucks in the industry. That's why we back them with one of the ...

## Contact Us

For more information, pricing, or custom network solutions, please contact us:

Website: <https://hashherbcafe.co.za>

Email: [hello@hashherbcafe.co.za](mailto:hello@hashherbcafe.co.za)

Phone: +27 63 814 7295

Address: 15 Galaxy Road, Linbro Business Park, Johannesburg, 2065, South Africa

This document is for informational purposes only. Specifications subject to change without notice.

