

Explosion-proof requirements for power supply boxes and distribution boxes



Overview

Any electrical installation in explosive atmospheres must comply with EN 60079-14 Explosive atmospheres. Part 14, Design, selection and installation of electrical installations. Explosion-proof enclosures are used by such facilities to ensure the safe housing of electrical components that could cause a spark and ignite these gases in the atmosphere. What Is An Explosion Proof Box or Enclosure?

They are a cast aluminum or iron box that can withstand a heavy-duty explosion. Explosion Protection to EN, IEC. Internal wiring to the terminal is finished. Copper-free Aluminium Alloy (carbon steel), powder-coated surface, or stainless. Appleton - ATEX 2WAY Explosion Proof Distribution Box 24V /110V / 220V ensures safe, reliable power distribution for hazardous locations. Built with a GRP enclosure and IP66 protection, it is highly durable, lightweight, and easy to transport. This means: Wall penetrations require double sealing with flameproof putty and compression glands. Fundamental

Principle : Your safest distribution box is the one that's not in the hazardous area at all. Always ask: "Does this need to be.

Explosion-proof requirements for power supply boxes and distribution



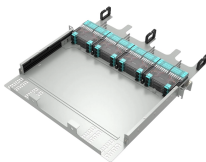
In order to implement the necessary safety measures in the most hazardous areas, you should be aware of several types, standards, and rules for the maintenance of explosion-proof ...



This article discusses requirements for companies and installers when designing and installing electrical systems in hazardous areas.



Every Explosion Proof Enclosure, intrinsically safe barrier, junction box or any other containment enclosure should comply with the standards outlined by NEC Hazardous Area Classifications.



Fasten conduits to sheet metal boxes and cabinets with two locknuts where required by NFPA 70, where insulated bushings are provided, and where bushings cannot be brought into firm contact with the ...



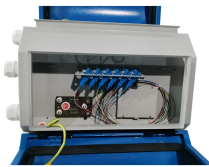
Other sections of this subpart. All applicable requirements in this subpart apply to hazardous (classified) locations unless modified by provisions of this section.



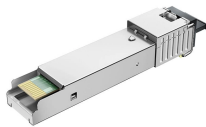
Measures: In order to ensure safe use, lighting explosion-proof distribution boxes (boards) are required not to be made of flammable materials. Even in dry, dust-free places, wooden explosion-proof ...



Explosion-proof electrical equipment, such as explosion-proof distribution boxes, is specifically designed for hazardous environments where flammable gases, vapors, or dust may be present. Proper ...



Explosion Protection to EN, IEC. Can be used in Zone 1,2,21,22 ...



Explosion Protection to EN, IEC. Can be used in Zone 1,2,21,22 Class I, Zone 1,2 Division 1, Groups C, D Flameproof enclosure (Ex d IIB)The main switch and branch switch are operated with the external ...



Creating truly explosion-proof installations requires: The companies that get this right don't just comply with standards - they develop institutional expertise that permeates every design ...



Appleton - ATEX 2WAY Explosion Proof Distribution Box 24V /110V / 220V ensures safe, reliable power distribution for hazardous locations. Built with a GRP enclosure and IP66 protection, it is highly ...

Contact Us

For more information, pricing, or custom network solutions, please contact us:

Website: <https://hashherbcafe.co.za>

Email: hello@hashherbcafe.co.za

Phone: +27 63 814 7295

Address: 15 Galaxy Road, Linbro Business Park, Johannesburg, 2065, South Africa

This document is for informational purposes only. Specifications subject to change without notice.

