

## Explosion-proof DC distribution box



## Explosion-proof DC distribution box



Explosion-proof distribution boxes are designed to safely control and distribute electrical power in hazardous environments, preventing ignition risks.



This explosion-proof distribution box is built for reliable protection in demanding industrial settings. It supports stable distribution and helps reduce risks linked to exposed electrical components.



An explosion-proof distribution box is a rugged enclosure for hazardous areas, safely delivering power while preventing sparks or heat from igniting flammable surroundings.



These are available in a range of materials including Stainless Steel, GRP & Sheet Steel from IP42 (Indoor) to IP 66 (Outdoor) Applications.



·Equipped with specialized hinge structure, which can prevent the flameproof joints from damage when opening and closing the box, and greatly prolong the service life of box. The boxes can be combined ...



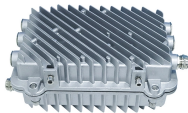
Explosion-proof electrical distribution boxes are essential for safety in hazardous environments. These specialized enclosures are built to contain internal explosions and stop the ignition of flammable ...



Durable Hexlon Explosion Proof Distribution Boxes and Electrical Enclosures, IECEx and ATEX certified for Zone 1 and Zone 2.



R. STAHL's technology provides explosion protection of the breaker itself. This clever design reduces the need for heavy cast metal enclosures and conduit seals. It minimizes safety risks caused by ...



Flameproof and explosion proof, these power overhaul distribution boxes are suitable for use in hazardous areas. Main switch: Maximum current is 180A. Branch circuit: Maximum current is 6~95A. ...



Distribution Boxes BXM (D)51 Series Explosion proof Distribution Boxes Lighting/Power (Ex d e IIB)  
Distribution Boxes BXM (D)53 Explosion proof Distribution Boxes Lighting/Power (Ex d e IIC) ...

## Contact Us

For more information, pricing, or custom network solutions, please contact us:

Website: <https://hashherbcafe.co.za>

Email: [hello@hashherbcafe.co.za](mailto:hello@hashherbcafe.co.za)

Phone: +27 63 814 7295

Address: 15 Galaxy Road, Linbro Business Park, Johannesburg, 2065, South Africa

This document is for informational purposes only. Specifications subject to change without notice.

