

## European Standard Cable Tray Models



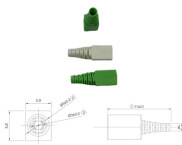
## European Standard Cable Tray Models



With our cable trays with integrated ends, Trayco® is constantly looking for solutions that increase our customers' competitiveness due to their capacity, light weight (L) or ease of assembly.



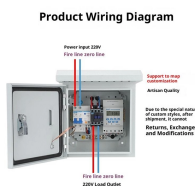
“Technical Information” and “Loading Diagrams” about EN Series Standard Type Cable Trays are declared in the attached “Technical Catalog”. The data declared in the Technical Catalog are subject ...



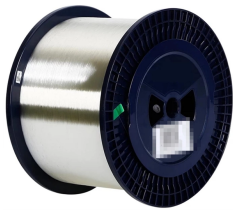
Our product range includes stainless steel cable trays, galvanised cable trays, and wire cable trays, available in multiple cable tray types — closed, perforated, ladder, and wire-mesh.



Delivering engineered solutions in cable management ABB manufacturers a comprehensive range of cable tray systems and solutions including cable ladder, perforated tray, channel tray and metal ...



Cable tray support locations are defined by the NEMA VE-1 and VE-2 Manufacturing & Installation Standards, which specify the requirements for cable tray systems designed for use in accordance ...



NEMA VE 1-2017 Specifies requirements for metal cable trays and associated fittings designed for use in accordance with the rules of Canadian Electrical Code, Part I and the National Electrical Code®



Not all cable trays are equivalent. The mechanical and electrical characteristics, tests, certifications, overall quality management, recommendations mentioned in this technical guide only apply to our ...



The systems are suspended from the ceiling with threaded rods, stand-off brackets allow raised floor mounting of cable trays, ladders and mesh cable trays. The universal systems comprise ceiling ...



EAE cable trays and ladders provide high-strength cable protection that protects the cables from external factors. EAE cable trays are mass produced with the "Roll Forming" method on automatic ...



Cable trays for industrial and marine use. Includes distribution trays, cable routes and NATO-type models. Request a quote directly via our webshop.

## Contact Us

For more information, pricing, or custom network solutions, please contact us:

Website: <https://hashherbcafe.co.za>

Email: [hello@hashherbcafe.co.za](mailto:hello@hashherbcafe.co.za)

Phone: +27 63 814 7295

Address: 15 Galaxy Road, Linbro Business Park, Johannesburg, 2065, South Africa

This document is for informational purposes only. Specifications subject to change without notice.

