


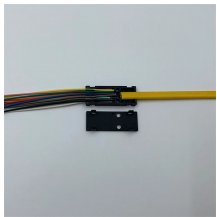



# Estimated Cost Calculation Table for Distribution Boxes



## Overview

Homeowners typically pay for a distribution box replacement based on box size, amperage, wiring needs, and permit requirements. The main drivers are panel capacity, existing wiring condition, permit requirements, and whether any upgrade to. Calculation method of distribution box:  $A = (\sum B + C) * K$  XL-21 low-voltage power cabinet product introduction XL-21 series power distribution box is suitable for low-voltage power distribution systems of power plants, substations, petroleum, chemical, metallurgy, machinery and other factories and mining. Homeowners typically pay for replacing a septic distribution box based on site access, material type, and labor. Among the most critical components are DC circuit breakers, which serve as the primary. The Suggested Retail price column, also referred to in the industry as the third column, end column or best column are the manufactures' most current published prices. The Average Cost column represents the national average purchase prices and is to be used as a guide to competitive pricing.

## Estimated Cost Calculation Table for Distribution Boxes

	<p>Typical cost ranges for replacing a distribution box or service panel in the United States vary widely based on panel size, amperage, labor, and whether a full service upgrade is needed.</p>
	<p>Overview Of Costs Cost ranges reflect typical residential septic systems in the United States, with total project estimates often falling between \$1,100 and \$5,000 depending on access ...</p>
	<p>Explore the complete breakdown of distribution box costs, including safety features, scalability options, and operational benefits. Learn how to maximize your investment in electrical distribution systems.</p>
	<p>MISO's Transmission Cost Estimation Guide for MTEP24 describes the approach and cost data that MISO uses in developing its cost estimates. This document's assumptions and cost ...</p>
	<p>XL-21 power distribution box is divided into two types, The cabinet heights of 1700mm and 1800mm are common type (P type), the cabinet is installed independently, and the top can be ...</p>



Key cost drivers include panel amperage, indoor vs outdoor location, wiring length, and whether a full panel upgrade or rerouting is needed. The article outlines cost ranges, per-unit pricing, ...



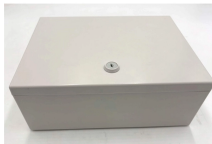
This document provides guidance on estimating materials and labor costs for a residential electrical project. It includes templates for an estimate table and computation of quantities of materials like ...



Homeowners typically pay for a distribution box replacement based on box size, amperage, wiring needs, and permit requirements. The price range reflects labor, materials, and ...



These services include an updated price and labor guide, complete backup electrical estimating service, computerized databases, electrical estimating software, electrical estimating handbooks, and ...



Estimate your commercial electrical installation costs with our easy calculator. Get project-specific pricing based on type, size, location, and features.

## Contact Us

For more information, pricing, or custom network solutions, please contact us:

Website: <https://hashherbcafe.co.za>

Email: [hello@hashherbcafe.co.za](mailto:hello@hashherbcafe.co.za)

Phone: +27 63 814 7295

Address: 15 Galaxy Road, Linbro Business Park, Johannesburg, 2065, South Africa

This document is for informational purposes only. Specifications subject to change without notice.

