

## Enclosed trough-type hot-dip galvanized cable tray



## Enclosed trough-type hot-dip galvanized cable tray



Over the past 55+ years, MP Husky US Cable Tray has engineered and manufactured the most reliable, highest quality, cost effective and innovative cable trays systems available.



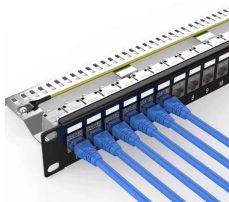
Leading manufacturers of Hot Dip Galvanized (HDG) cable trays. Our trays offer superior zinc coating for maximum rust protection in outdoor and industrial areas.



Trough Type Galvanized Cable Tray is a fully enclosed cable management system, typically made of Q235 steel with hot-dip galvanized coating for corrosion resistance. Its rectangular trough shape with ...



This durable cable tray features a fully enclosed trough design, which safeguards cables from dust, moisture, and mechanical damage. The 400mm width and 200mm height accommodate a moderate ...



The selection of non-spangle galvanized sheet, which has great uniformity of zinc layers and the thickness of the galvanized layer far exceeds the ...



Leading manufacturers of Hot Dip Galvanized (HDG) cable trays. Our trays offer ...



Rugged Cope Trof HDGAF tray for rigid, safe cable support in various indoor setups.



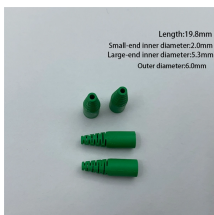
Our wind certification report provides you with list of acceptable B-Line series cable tray supports, fittings and covers based off of the environmental conditions, cable loading, and type of cable tray in your ...



Compared to fully enclosed trough type cable trays, tray type cable trays have lower material and construction costs, making them suitable for general-purpose projects with limited budgets.



The selection of non-spangle galvanized sheet, which has great uniformity of zinc layers and the thickness of the galvanized layer far exceeds the national standards, makes the service life ...



In the power industry, hot-dip galvanized cable trays can effectively prevent electrochemical corrosion and other forms of damage, and are one of the important facilities to ensure the safe and stable ...



It can be used for laying fully enclosed cables. It is most suitable for laying control cables for computer cables, communication cables, thermocouple cables and other highly sensitive systems.

## Contact Us

For more information, pricing, or custom network solutions, please contact us:

Website: <https://hashherbcafe.co.za>

Email: [hello@hashherbcafe.co.za](mailto:hello@hashherbcafe.co.za)

Phone: +27 63 814 7295

Address: 15 Galaxy Road, Linbro Business Park, Johannesburg, 2065, South Africa

This document is for informational purposes only. Specifications subject to change without notice.

