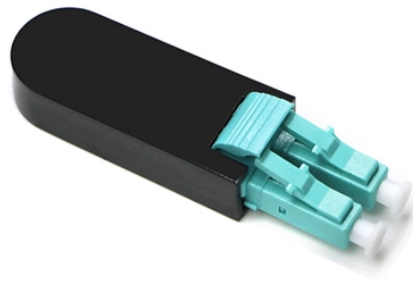


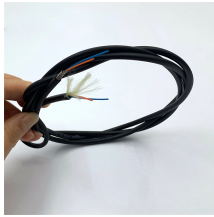
# **Emergency Power Outage Requirements for Primary Distribution Boxes**



## Emergency Power Outage Requirements for Primary Distribution Bo



Emergency power must be supplied to the life safety branch within ten seconds of a normal source power outage. Typically, these loads are served by automatic-transfer/bypass-Isolation switches.



These paragraphs apply to structures that support overhead electric power transmission and distribution lines and equipment. They do not apply to portions of buildings, such as loading ...



In this article, we'll explore the installation requirements in NFPA 110, and what to consider when designing and installing your facility's emergency power supply system (EPSS).



**CAutiOn:** Individual unit equipment must not be connected to the emergency circuit, because it won't operate when normal power is lost, since the equip-ment is being supplied by the emergency power ...



You need your EPSS to be available within a reasonable time frame after power failure—and you need it to fulfill your load requirements in full until your primary power source comes back on.



While NFPA 110 applies to required emergency and standby power systems, it can be voluntarily applied to optional standby systems where an outage could result in a large economic loss or an extended ...



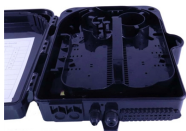
Emergency and standby power systems ensure continuity during power outages. The National Fire Protection Association (NFPA) has set comprehensive safety standards, known as ...



In this guide, we'll explore what NFPA 110 is, and what to consider when implementing and maintaining your facility's emergency power system.



NFPA 110 addresses performance requirements for emergency and standby power systems. These systems provide an alternate source of electrical power in buildings when the normal ...



Requirements covering the performance of emergency and standby power systems providing an alternate source of electrical power to loads in buildings and facilities in the event that the primary ...

## Contact Us

For more information, pricing, or custom network solutions, please contact us:

Website: <https://hashherbcafe.co.za>

Email: [hello@hashherbcafe.co.za](mailto:hello@hashherbcafe.co.za)

Phone: +27 63 814 7295

Address: 15 Galaxy Road, Linbro Business Park, Johannesburg, 2065, South Africa

This document is for informational purposes only. Specifications subject to change without notice.

