

## Emergency Communication Grade Fiber Ethernet Switch SFP Selection Guide



### Overview

This ultimate guide is designed to provide a comprehensive, practical, and vendor-neutral framework for 1G SFP module selection. Whether you are planning a new network deployment, upgrading an existing infrastructure, or sourcing compatible optics as an alternative to OEM modules, this article will. The MN-FNS Series managed Ethernet switches from EDWARDS are advanced managed switch solutions and accessories that provide for a fully scalable Ethernet network to support virtually any mass notification or life safety application. These networks may be dedicated for use by ECS/MNS/LSS systems or. Published: 2026 | Category: Network Hardware Knowledge Base / Optical Communications Core Keywords: SFP Module, SFP Transceiver, Small Form Factor Pluggable, What is SFP, SFP vs SFP+ Read Time: Approx.

## Emergency Communication Grade Fiber Ethernet Switch SFP Selection



Media (fiber vs copper), wavelength, reach, connector, temperature grade, and even application domain (Ethernet, SONET/SDH, PON, Fibre Channel) all matter. Use the tables below to pick the exact 1G ...



Read the definitive 2026 guide on SFP modules. We explain Single Mode vs Multimode, DDM diagnostics, and how to choose the right transceiver for Cisco, Juniper, and more.



This comprehensive guide details Gigabit and Multi-Gigabit SFPs, their specifications, and compatibility across Cambium's PTP, PMP, cnWave, and cnMatrix product lines.



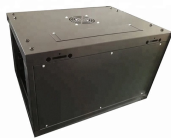
Learn how to choose the right 1G SFP module for your network. Our guide covers compatibility, distance, fiber type, cost, and vendor selection for optimal performance.



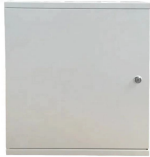
It converts copper Ethernet to fiber, and may be used to extend a copper Ethernet network up to 74 miles (120km) over fiber optic cable. This system is designed to transport critical communications ...



Select an SFP module that matches the bandwidth of your network switch. 1G modules are technically classified as SFP transceivers, 10G modules are classified as SFP+ transceivers, and QSFP ...



All switches use hot-swappable Small Form-Factor Pluggable (SFP) fiber optic cable transceiver modules that allow the system designer to choose the fiber optic media required by the network.



CXR SFP modules are based on industrial grade components to deliver higher reliability and to enable extended operating temperature range in any host equipment and integration conditions.



Learn what an SFP module is, how SFP, SFP+, SFP28, and QSFP differ, and how to choose the right module for speed, distance, fiber type, and compatibility.



Siemens' RUGGEDCOM SFP1122-1SX2 industrial grade 1 Gbps fiber optic SFP transceiver operates within a wide temperature range (-40 to 85 °C or -40 to 185 °F) and provides high performance ...

## Contact Us

For more information, pricing, or custom network solutions, please contact us:

Website: <https://hashherbcafe.co.za>

Email: [hello@hashherbcafe.co.za](mailto:hello@hashherbcafe.co.za)

Phone: +27 63 814 7295

Address: 15 Galaxy Road, Linbro Business Park, Johannesburg, 2065, South Africa

This document is for informational purposes only. Specifications subject to change without notice.

