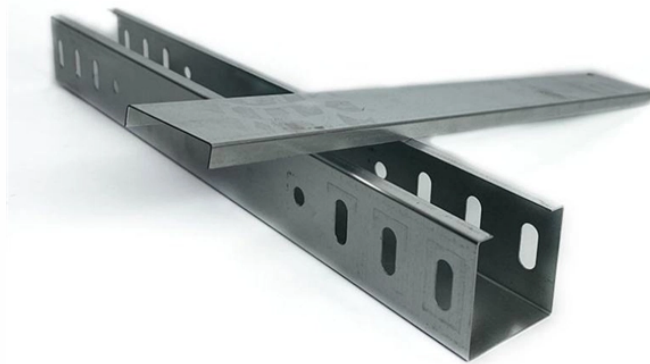


Electronic mounting plate of the distribution box



Electronic mounting plate of the distribution box



Surface-mounted hermetic metal electrical enclosure / distribution box is designed for safe installation of electrical, automation, control, signaling, and industrial components in both indoor and outdoor ...



Steel mounting plate for steel terminal boxes. This Power Distribution Mounting Plate item measures 14.76 H x 30.31 W x 0.08 inches thick and is constructed with mild steel.



Stainless steel: is used to protect and protect electronic components and prevent ...



Mounting plates as additions to enclosures and cases where a mounting plate is not included in the scope of supply. Partial mounting plate and partial installation plates for Rittal enclosure systems ...



The steel mounting plate contributes to speeding up the assembly of the terminal box since it can be machined easily and equipped with components before being mounted.



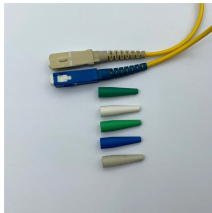
The trickiest part of installing inner components of a distribution box is that the components' heights are irregular. E-Abel's flexible mounting bracket can solve this problem easily.



Stainless steel: is used to protect and protect electronic components and prevent their manipulation. Galvanized: it is the most common. Zinc coated protected against corrosion and easy for making the ...



The trickiest part of installing inner components of a distribution box is that the components' heights are irregular. E-Abel's flexible mounting bracket can ...



Easy to secure and organize the internal components of the junction box, such as terminals, switches, or receptacles ensuring they are properly installed and maintained within the box.



Box Mounting Plate With Far Side Support, Box Size: 4", 4-11/16", 5", Snap-On Installation To Heavy Duty Telescoping Bracket, Can Also Be Mounted Directly To Metal Or Wood Studs, Far Side Support ...



Easy to secure and organize the internal components of the junction box, such as ...



Choose from our selection of electrical box brackets, including mounting adapters, mounting brackets, and more. Same and Next Day Delivery.



SLAYSON's Internal Mount Plates provide a stable and structured platform for securely installing electrical and electronic components within our industrial enclosures.

Contact Us

For more information, pricing, or custom network solutions, please contact us:

Website: <https://hashherbcafe.co.za>

Email: hello@hashherbcafe.co.za

Phone: +27 63 814 7295

Address: 15 Galaxy Road, Linbro Business Park, Johannesburg, 2065, South Africa

This document is for informational purposes only. Specifications subject to change without notice.

