

## Electric Well Optical Cable



### Overview

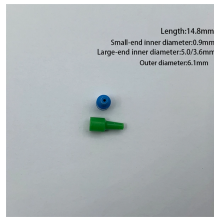
Because its disposable, this single use fiber eliminates any concerns of damaging the cable during fracturing. ExpressFiber can be pumped down hole at any point in time before or during the fracturing o.



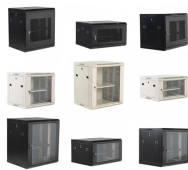
## Electric Well Optical Cable



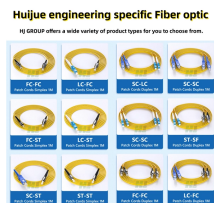
We provide the industry's largest portfolio of tube based products to connect downhole systems with the surface. We use welded stainless steel and nickel alloy tubing to protect electrical and optical ...



In comparison to traditional wireline cables, optical fiber logging cables are lighter, safer, and less prone to signal interference. Optical fiber cables are typically used for well logging activities ...



Permanent downhole fiber-optic cables are critical infrastructure in wellbore monitoring systems, ensuring reliable transmission of data for applications such as distributed temperature, acoustic, and ...



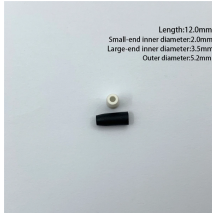
TEF cable is the sensor element for modern distributed fiber optic sensing technologies of DTS and DAS, which have become essential well management tools for monitoring important technologies ...



Halliburton introduces ExpressFiber, a single-use fiber optic cable that offers accurate, direct cross-well measurements, at a price point that enables fracture monitoring on every well pad.



A unique, combination fiber-optic and electrical line solution, the SureCONNECT FE system connects the lower and upper completion to provide data-driven insights that enhance reservoir understanding ...



The range of cables for direct buried installation includes all our four basic designs: concentric core, grooved core tape, DryTech and tape in loose tubes. The cables are reinforced with corrugated steel ...



Fibercore offers a range of designs for downhole fiber optic cable to meet the specific requirements of your oil or gas well. These types of cables are permanently installed either cemented in behind the ...



AFL's Traditional Downhole Cable is designed to perform in the well and withstand elevated temperatures, high pressure and corrosive environments. The cable is customized to the customer's ...



Weatherford's electrical downhole cable provides a reliable pathway between the in-well pressure and temperature gauges and surface data acquisition unit for both telemetry and power.

## Contact Us

For more information, pricing, or custom network solutions, please contact us:

Website: <https://hashherbcafe.co.za>

Email: [hello@hashherbcafe.co.za](mailto:hello@hashherbcafe.co.za)

Phone: +27 63 814 7295

Address: 15 Galaxy Road, Linbro Business Park, Johannesburg, 2065, South Africa

This document is for informational purposes only. Specifications subject to change without notice.

