

Does the cable exiting the cable tray need a PVC conduit



Overview

It allows the cable to exit the protective tray and run exposed to connect to a motor, control panel, or robot— without conduit —for a distance up to 1. This eliminates the need for separate wire and conduit at drop points, dramatically simplifying installation and. Understanding when tray cables require conduit, and when they don't, is critical for both code compliance and efficient cable installation. They're commonly used in power distribution, control. The two most common methods to transition from a cable tray to the equipment are: Cables or conductors leaving the cable tray and entering the equipment through a raceway with a bushing on the end (see image A). Cables or conductors leaving the cable tray and entering the equipment through a. According to the NEC (National Electric Code), tray cable is defined as “a factory assembly of two or more insulated conductors, with or without associated bare or covered grounding conductors under a nonmetallic sheath, for installation in cable trays, in raceways, or where supported by a. I'm getting conflicting direction regarding the installation of tray rated (TC) cable installed in conduit. Please point me to the specific Article covering this topic. Great, Thank you! I'm getting conflicting direction regarding the installation of

tray rated. Conduit and cable tray are the backbone of industrial electrical installation — protecting power and instrument cables from physical damage, environmental exposure, and electromagnetic interference.

Does the cable exiting the cable tray need a PVC conduit



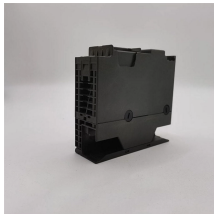
Tray cables are fundamentally designed for use in cable trays rather than conduit. However, conduit becomes necessary when cables are underground and not direct-burial rated, in ...



The baseline rule is straightforward: Type TC cable can be used for power, lighting, control, and signal circuits in cable trays (including trays with mechanically discontinuous segments ...



I'm getting conflicting direction regarding the installation of tray rated (TC) cable installed in conduit. Please point me to the specific Article covering this topic.



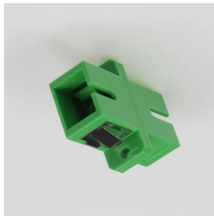
Do you have any information available for recommended installation clearances for this type of cable tray? Answer: The NEC does not have a specific installation clearance, but indicates in section 318-6 ...



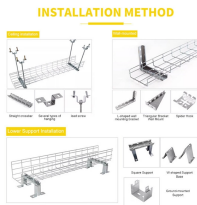
Use conduit for individual circuits that need physical protection, for hazardous areas requiring specific conduit types (RMC in Div 1), and for short runs to individual equipment.



Cables and conductors must be secured to the cable tray at intervals according to installation instructions. For non-horizontal runs, cables should be fastened securely to transverse ...



It allows the cable to exit the protective tray and run exposed to connect to a motor, control panel, or robot— without conduit —for a distance up to 1.8 meters.



A box shall not be required where cables or conductors are installed in bushed conduit and tubing used for support or for protection against physical damage or where conductors or cables transition to a ...



Despite widespread misinterpretation in the industry, standard tray-rated cable cannot run outside of the cable tray per the National Electrical Code (NEC) Sec. 336.10 (7) from 2014. If a cable must run ...



A. According to Sec. 392.46, a box is not required where cables or conductors are installed in a bushed raceway used for support, protection against physical damage, or where conductors or cables ...

Contact Us

For more information, pricing, or custom network solutions, please contact us:

Website: <https://hashherbcafe.co.za>

Email: hello@hashherbcafe.co.za

Phone: +27 63 814 7295

Address: 15 Galaxy Road, Linbro Business Park, Johannesburg, 2065, South Africa

This document is for informational purposes only. Specifications subject to change without notice.

