

Do outdoor electrical distribution boxes need guardrails



Overview

All 15- and 20-amp, 125-volt outdoor receptacles must have GFCI protection. Exception: Some snow-melting or deicing equipment may be exempt if powered by an inaccessible outlet. □□ Quick Answer: An outdoor electrical junction box is a weatherproof enclosure where electrical wires connect or split, required by code to protect connections from moisture, provide safe access for maintenance, and prevent electrical hazards in exterior applications. What is an Outdoor Electrical. Linkewell's power distribution box is a good choice. It protects against rain, dust, and bad weather. Follow your local electrical codes. Use the right tools for the job. Even when the floor is clearly marked, carts, boxes and other miscellaneous items end up being left in the restricted area. I believe that all conduit, regardless of the plastic. Below is a comprehensive guide to NEC rules for outdoor receptacles, lighting, conduit, boxes, pool zones, and more.

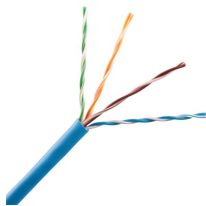
Do outdoor electrical distribution boxes need guardrails



This document contains information relating to the placement of electric underground equipment and enclosures. This includes pad-mount, subsurface, and vault installations with or without equipment.



In practical terms, a code-compliant electrical junction box should protect all wire connections, provide enough internal space for conductors, remain accessible after installation, ...



In practical terms, a code-compliant electrical junction box should protect all wire connections, provide enough internal space for conductors, ...



Outdoor wiring faces harsher conditions than indoor installations as it is exposed to moisture, sunlight, and mechanical damage. Below is a comprehensive guide to NEC rules for ...



Even when the floor is clearly marked, carts, boxes and other miscellaneous items end up being left in the restricted area. That is why many of our clients have added polymer guardrail and ...



Outdoor receptacles require GFCI protection and must be readily accessible. Weatherproof covers are essential for protecting outdoor receptacles from moisture. Buried wiring ...



The NEC code of junction box says you cannot hide boxes behind walls, ceilings, or floors. You should never cover a box with drywall, paneling, or any part of the building.



Handrails are commonly used in industrial facilities to support conduit, control stations, light standards and even junction boxes. The top rail must have at least 3" clearance per OSHA rules.



Under Regulation 522.3 of BS 7671, outdoor equipment must resist mechanical and environmental stress. Always: Mount securely on a firm surface. Use the correct size and type of IP ...



Outdoor electrical junction boxes are specifically rated to prevent moisture infiltration through gaskets, seals, and drainage provisions.



Using certified products like Linkewell's power distribution box helps protect your system from weather and damage. Always shut off the main power, wear proper PPE, and test all circuits ...

Contact Us

For more information, pricing, or custom network solutions, please contact us:

Website: <https://hashherbcafe.co.za>

Email: hello@hashherbcafe.co.za

Phone: +27 63 814 7295

Address: 15 Galaxy Road, Linbro Business Park, Johannesburg, 2065, South Africa

This document is for informational purposes only. Specifications subject to change without notice.

