

Distribution box remark W



Distribution box remark W



Distribution boxes are a great way to increase flexibility and cut costs. They lower your labor costs by reducing installation and troubleshooting time. They take up less space than loose wires, look neater ...



Learn what a distribution box is, its types, and how to choose the right one for your project. Includes clear examples and expert tips.



Our Christy range of concrete enclosures, lids and accessories provides robust, durable utility access in deliberate traffic environments and high-impact applications.



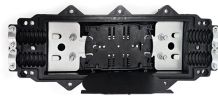
At its core, an electrical distribution box (or distribution board) is a metal or plastic enclosure that houses various components responsible for managing and distributing electricity ...



What's the difference between a distribution box and a sub-panel? A distribution box typically refers to the main electrical panel that receives power from the utility service. A sub-panel is ...



In the distribution box, commonly known as the distribution board or breaker panel, you'll find several critical components responsible for managing and distributing electrical power ...



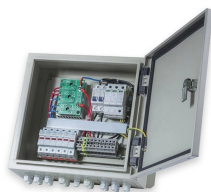
Metal Distribution Box Features Continuously welded seams Foam-in-place seamless gasket 120-degree opening heavy-duty industrial hinges IP66 protection rating against dust and water according ...



What is the distribution box? A distribution box, also known as a distribution panel or board, is a cabinet that holds electrical parts used to supply power to multiple circuits within a ...



Distribution boxes, or electrical junction boxes as they are sometimes called, play a vital role in electrical systems. They act as the central location where electrical energy is given out and ...



Our distribution boxes are perfect for industrial environments, catering to automation, robotics, and processing facilities. They provide cost-effective solutions through automated dispensing and ...

Contact Us

For more information, pricing, or custom network solutions, please contact us:

Website: <https://hashherbcafe.co.za>

Email: hello@hashherbcafe.co.za

Phone: +27 63 814 7295

Address: 15 Galaxy Road, Linbro Business Park, Johannesburg, 2065, South Africa

This document is for informational purposes only. Specifications subject to change without notice.

