

Distribution box PC represents

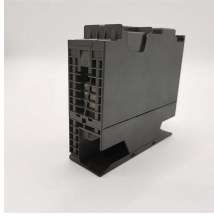


Overview

A distribution boxes acts as the load center and main distributor of electrical power within a building. Today, electrical systems are essential for homes and industries.



Distribution box PC represents



Distribution boxes, also called distribution boards, are essential components in both residential and commercial electrical systems. Their main role is to distribute electrical power ...



A distribution box, also known as a distribution board, electrical panel, or breaker box, is an enclosure that houses electrical components responsible for distributing electricity throughout a ...



A distribution box, also known as a distribution board or panel, is the central unit that distributes incoming electrical power to various circuits. The primary role of a distribution box is to ...



A distribution box, also known as a distribution board, electrical panel, or breaker box, is an enclosure that houses electrical components responsible for distributing electricity throughout a ...



A distribution box, also known as a power distribution box or electrical distribution box, is used to distribute electrical power safely to multiple circuits. It helps organize, protect, and control ...



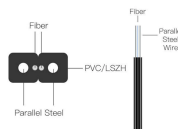
Learn about the internal structure of a distribution box, its components, functions, and key types. Understand its role in electrical systems and safety. A distribution box is a key part of ...



What is a Distribution Box? A distribution box, or DB box, is a circuit breaker enclosure. It is a vital part and central hub of any electrical system. The hub distributes electrical power from a ...



In electrical systems, a distribution box, also known as a breaker box or distribution board, plays a critical role in managing and distributing electrical power within buildings.



A distribution boxes acts as the load center and main distributor of electrical power within a building. Also called a distribution board, panel board, breaker panel, or electric panel, it is the ...



A distribution box, also known as a distribution board or panel, is the central unit that distributes incoming electrical power to various circuits. The ...



Electrical parameter description: Equivalent to the electrical nameplate, it provides basic electrical information of the distribution box, such as number, rated power, required coefficient, power ...



A distribution box is a device that, as the name suggests, is designed to distribute electrical power. It takes the electrical power from the main power line and distributes it throughout ...

Contact Us

For more information, pricing, or custom network solutions, please contact us:

Website: <https://hashherbcafe.co.za>

Email: hello@hashherbcafe.co.za

Phone: +27 63 814 7295

Address: 15 Galaxy Road, Linbro Business Park, Johannesburg, 2065, South Africa

This document is for informational purposes only. Specifications subject to change without notice.

