

Distribution Network Automation Terminal Operation and Maintenance Solution



Distribution Network Automation Terminal Operation and Maintenance



Optimize grid operations with Hubbell Power Systems' advanced distribution automation solutions. Upgrade equipment for consistent operation, longer switch life and improved crew safety.



As the service life of distribution automation terminal equipment increases, its reliability decreases, and the lack of efficient maintenance plans can easily I



Improve the reliability and availability of power distribution grids. Siemens Distribution Automation functionality ranges from monitoring to fully automated applications, including FLISR (fault location, ...



These features enable Distribution Automation (DA) operations by coordinating field devices, specialized software, and dedicated communication networks. This coordination allows the system to ...



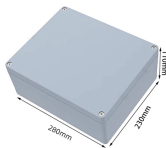
As the world's leading supplier to the oil and gas transportation and distribution industries, ABB has provided you with equipment, automation systems, software and services to run your operation ...



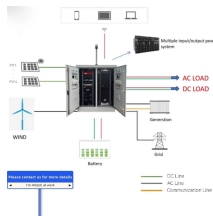
This paper expounds some common problems and solutions of remote maintenance under current wireless public network communication mode. Export citation and abstract BibTeX RIS. ...



Discover how our distribution network feeder terminal unit enhances power distribution efficiency with advanced fault management, real-time monitoring, and intelligent automation capabilities for ...



The distribution network intelligent operation and maintenance and communication device developed in this paper has been installed and applied in some areas of the Southern Power Grid, successfully ...



The application value of dtu distribution network automation terminal is self-evident. It can improve the operating efficiency and reliability of the power distribution system, reduce the ...



What if you could maximize results across your terminal operations by giving your staff a site-wide view in a single automation platform? TerminalManager — Your Solution to Maximize the Efficiency, ...

Contact Us

For more information, pricing, or custom network solutions, please contact us:

Website: <https://hashherbcafe.co.za>

Email: hello@hashherbcafe.co.za

Phone: +27 63 814 7295

Address: 15 Galaxy Road, Linbro Business Park, Johannesburg, 2065, South Africa

This document is for informational purposes only. Specifications subject to change without notice.

