

Distribution Box Cover Color Change Scheme



Distribution Box Cover Color Change Scheme



A color palette generator is a tool that helps designers and creators quickly create groups of colors that work well together. These tools use color theory rules such as complementary, analogous, and ...



Find out how printing models (CMYK vs. RGB) and color psychology influence custom packaging. Learn how to select the appropriate colors for your ...



In this blog, we explore how you can use colors and color combinations to fit your brand identity in your packaging designs.



When you put your products in boxes, there are numerous color hues. From light black to red and white to rich green, blue, and yellow, we offer digital printing with CMYK and PMS color schemes that ...



Learn the best box color designs for every industry. In the world of product packaging, color is more than decoration — it's a strategic tool. Studies show that color can influence 67% of a consumer's first ...



This blog post ZDpachaging explores vivid color schemes in box packaging design ideas that can make your product stand out from the crowd. So whether you're looking for retail box design tips or simply ...



Find out how printing models (CMYK vs. RGB) and color psychology influence custom packaging. Learn how to select the appropriate colors for your product and company.



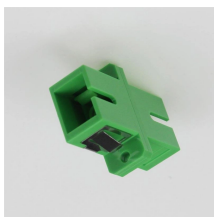
Delivery parcel box with barcode and cozy color scheme, sealed with tape. Ideal for ecommerce, packaging design, and online shipping visuals.



Read this blog to gather some stunning color schemes for rigid box packaging designs. Selecting a suitable contrast color scheme for your rigid boxes offers you multiple benefits.



Create printable box templates in minutes. Customize and download dielines in AI, PDF, or DXF formats using our free box template maker.



This article will guide you step by step on choosing the right color scheme, with practical tools and real-world examples to create packaging that looks great and drives sales.

Study Color Theory Choose The Right Color Scheme Learn Color Psychology Wrapping Up

A color scheme is a combination of colors, each consisting of one or more of the twelve colors on the color wheel. Here are some of the main packaging color schemes and where you can use them: See more on artworkflowhq

```
.b_imgcap_alttitle p
strong,.b_imgcap_alttitle .b_factrow strong{color:#767676}#b_results .b_imgcap_altit
le{line-height:22px}.b_imgcap_alttitle{display:flex;flex-direction:row-
reverse;gap:var(--mai-smtc-padding-card-nested-default)}.b_imgcap_alttitle
.b_imgcap_img{flex-shrink:0;display:flex;flex-direction:column}.b_imgcap_alttitle
.b_imgcap_main{min-width:0;flex:1}.b_imgcap_alttitle
.b_imgcap_img>div,.b_imgcap_alttitle .b_imgcap_img a{display:flex}.b_imgcap_alttitle
.b_imgcap_img img{border-radius:var(--mai-smtc-corner-card-default)}.b_hList
img{display:block}.b_imagePair ner img{display:block;border-radius:6px}.b_algo
.vtv2 img{border-radius:0}.b_hList .cico{margin-bottom:10px}.b_title .b_imagePair>
ner,.b_vList>li>.b_imagePair> ner,.b_hList .b_imagePair>
ner,.b_vPanel>div>.b_imagePair> ner,.b_gridList .b_imagePair> ner,.b_caption
.b_imagePair> ner,.b_imagePair> ner>.b_footnote,.b_poleContent .b_imagePair>
ner{padding-bottom:0}.b_imagePair> ner{padding-
bottom:10px;float:left}.b_imagePair.reverse> ner{float:right}.b_imagePair
.b_imagePair:last-child:after{clear:none}.b_algo .b_title .b_imagePair{display:block}.
b_imagePair.b_cTxtWithImg>*{vertical-align:middle;display:inline-
block}.b_imagePair.b_cTxtWithImg> ner{float:none;padding-
right:10px}.b_imagePair.square_s> ner{width:50px}.b_imagePair.square_s{padding-
left:60px}.b_imagePair.square_s> ner{margin:2px 0 0 -60px}.b_imagePair.square_s.r
everse{padding-left:0;padding-right:60px}.b_imagePair.square_s.reverse>
ner{margin:2px -60px 0 0}.b_ci_image_overlay:hover{cursor:pointer}gukapackaging
```

Contact Us

For more information, pricing, or custom network solutions, please contact us:

Website: <https://hashherbcafe.co.za>

Email: hello@hashherbcafe.co.za

Phone: +27 63 814 7295

Address: 15 Galaxy Road, Linbro Business Park, Johannesburg, 2065, South Africa

This document is for informational purposes only. Specifications subject to change without notice.

