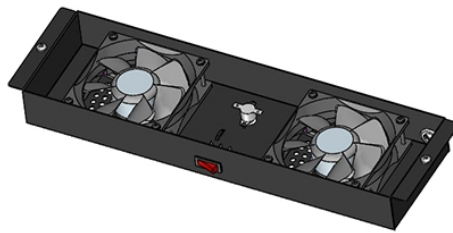


Distance between parallel laying of 10 kV lines and optical cables



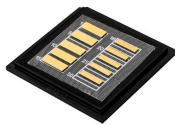
Distance between parallel laying of 10 kV lines and optical cables



Technical guide for safe separation of telecommunication and power cables. Covers aerial, buried, and building installations. Includes OSHA, NESC, ANSI/TIA/EIA standards.



A general solution of the electromagnetic-field equations for the case of overhead and underground transmission-line conductors of arbitrary topology and multilayer earth is presented.



Outdoor control cables may require larger conductor size to compensate for voltage drop due to the relatively long distance between the equipment and the control vault, especially for high-voltage and ...



When there are two different voltage ratings on cables, separation, either mechanical or by distance, is to avoid an insulation breakdown of the higher rated cable from breaking down the ...



Basically my question is that should the cable separation be measured from the centers of the two cables, or from the sides of the two cables?



A general solution of the electromagnetic-field equations for the case of overhead and underground transmission-line conductors of arbitrary topology ...



Cable laying standards are essential to ensure the safety, stability, and longevity of cable systems in industrial and infrastructure projects.



When laying cables in parallel at crossings over railways, highways, and also in places where mechanical damage is possible, the distances between them within the protective zone must ...



This document provides guidelines for maintaining proper separation between telecommunication cables and power cables to prevent electromagnetic interference and safety issues.



The purpose of this guide is to provide guidance to the substation engineer in established practices for the application and installation of metallic and optical cables in electric power transmission and ...



Due to the influence of factors such as tower configuration, line phasing, etc., Corning Optical Communications recommends that the owner/operator of the power line be consulted for assistance ...



Technical guide for safe separation of telecommunication and power cables. ...

Contact Us

For more information, pricing, or custom network solutions, please contact us:

Website: <https://hashherbcafe.co.za>

Email: hello@hashherbcafe.co.za

Phone: +27 63 814 7295

Address: 15 Galaxy Road, Linbro Business Park, Johannesburg, 2065, South Africa

This document is for informational purposes only. Specifications subject to change without notice.

