

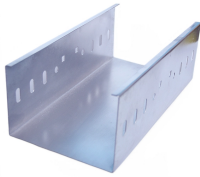
Dimensions of the power distribution box for the Parman labor force



Dimensions of the power distribution box for the Parman labor force



DIN rail adjustable in depth by 15 mm. Box is equipped with two earthing rails 10 x 8 mm. Length is 120 mm with 15x M5 connections each. Cable entrance in the rear 400 x 35 mm fitted with cable brush.



Determine the size of power manholes by the number of circuits, voltage ratings and splicing requirements of the cables within. Provide manholes that are a minimum 6.5 ft (2 m) deep.



The MLU provides an experience-based reference for estimating the electrical construction labor required to install typical electrical and communications systems.



This guide provides information on how to select the appropriate Distribution Box for Electric project. If you have any questions about distribution boxes, please feel free to contact us.



Understand distribution boxes (DB boxes) in 5 minutes. Learn about types, components, functions, and uses. Find the perfect DB box for your needs.



From residential 100-amp panels to massive 600 amp main distribution panels in commercial facilities, this comprehensive guide will help you understand distribution board types, ...



Lex Products offers a full range of portable power distribution boxes and units, specifically engineered for indoor and outdoor use for the entertainment, industrial and military industries.



Leviton Power Distribution Boxes deliver portable power when and where you need it. Built to withstand the heavy abuse in typical construction sites, entertainment venues, or anywhere ...



Our boxes support both single-phase and three-phase power distribution, making them ideal for industrial, commercial, and construction applications. All units are engineered to meet strict quality ...



Choose from our selection of power distribution boxes in a wide range of styles and sizes. Same and Next Day Delivery.

Contact Us

For more information, pricing, or custom network solutions, please contact us:

Website: <https://hashherbcafe.co.za>

Email: hello@hashherbcafe.co.za

Phone: +27 63 814 7295

Address: 15 Galaxy Road, Linbro Business Park, Johannesburg, 2065, South Africa

This document is for informational purposes only. Specifications subject to change without notice.

