
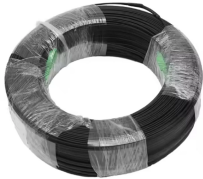





## Dimensions of surface-mounted main electrical box distribution box



## Dimensions of surface-mounted main electrical box distribution box

	<p>Modular Distribution Box Surface Mounted Complete Product 1M 16 Gang Opaque White          Modular Distribution Box Surface Mounted Complete Product 2M 32 Gang Transparent Dark Gray</p>
	<p>This guide explains standard electrical box dimensions by type, compares common sizes, and helps you select the right box for residential, commercial, and light industrial applications.</p>
	<p>These boxes have a main circuit breaker switch and main service knockouts in the corners. They are single-phase, 3-wire, and can be mounted for top or bottom feed conduit connections.</p>
	<p>Plastic Electrical Box, also known as a consumer control unit or electricity control unit. It is a device that is a type of distribution board that helps in protecting cables from overload and then damage or ...</p>
	<p>ELECTRONIC FACTORY TIME SWITCH - IP65 EFT-1          IP65 Weatherproof 4 way surface distribution board fitted with a DTS-16C20A time switch.          Switching contact: 1 changeover switch, Contact Rating: ...</p>



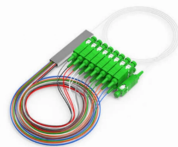
Experience streamlined power management with the DBSet 64 module, 4 row ...



Plastic Electrical Box, also known as a consumer control unit or electricity control ...



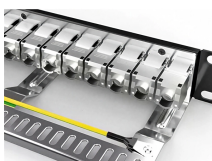
Experience streamlined power management with the DBSet 64 module, 4 row distribution board designed for surface mounting. The enclosure material is painted sheet steel thickness of 1.2mm.



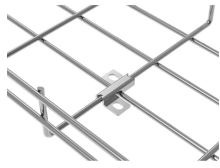
When a panelboard must be furnished in more than one section (box) for connection to one feeder, each section must be furnished with main bus and terminals of the same rating unless a main overcurrent ...



Aluminium Copper Distribution box - 300 mm<sup>2</sup> - 540 A max. Residential and small commercial panels | Distribution | !



Clear detailed description of each size and easy to select with the ordering codes. Box with four studs and adjustable nuts for easy fit / easy removal of the pan assembly. Generous wiring space. Easy fit ...



Extra discount: 5,00 % EDFK-12/1 Distribution box, surface mount, smoke door, N/PE rail 1×12 modul, IP40, (H×W×D=200×256×95mm) Net 14.82895 EUR 14.08750 EUR Gross 18.83277 EUR 17.89113 ...

## Contact Us

For more information, pricing, or custom network solutions, please contact us:

Website: <https://hashherbcafe.co.za>

Email: [hello@hashherbcafe.co.za](mailto:hello@hashherbcafe.co.za)

Phone: +27 63 814 7295

Address: 15 Galaxy Road, Linbro Business Park, Johannesburg, 2065, South Africa

This document is for informational purposes only. Specifications subject to change without notice.

