

Dimensions of fireproof partitions for electrical distribution boxes



Dimensions of fireproof partitions for electrical distribution boxes



Where walls or partitions are required to have a fire-resistance rating, recessed fixtures shall be installed such that the required fire resistance will not be reduced.



3.7 Do not install wall-mounted boxes back-to-back in opposite sides of wall; in stud walls, boxes shall be on opposite side of studs. In acoustic rated and fire rated walls boxes shall be ...



To protect against overheated ECUs, we've manufactured an ECU fire protection system consisting of an ECU cover housed with intumescent lining. The flexible cloth can nestle around cables, conduits ...



This Guide will walk you through the different IBC limitations and protection options based on the IBC categories of recessed boxes: [Read More Here.](#)



High speed electric motor with diamond tipped blades can be used for other building materials such as concrete, natural stone, brick etc. Low speed motor with tungsten carbide tipped blades is more ...



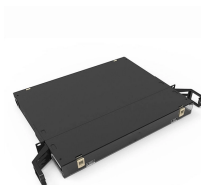
Discuss detailing aspects of fire resistance for fire walls, fire barriers and fire partitions including material and assembly options, continuity, structural stability, and penetrations.



Membrane penetrations of maximum 2-hour fire-resistance-rated walls and partitions by steel electrical boxes that do not exceed 16 square inches in area, provided that the aggregate area of the openings ...



Q: What are the requirements for maintaining the fire integrity of a fire-resistive wall when installing electrical boxes? A: According short answer is that it depends on not only the size of the individual ...



Can recessed boxes in fire rated walls must meet one of the following installation: A. Separated by horizontal distance of no less then 24 inch. B. Be surrounded by a fire rated gypsm in 5 ...



Can recessed boxes in fire rated walls must meet one of the following installation: A. Separated by horizontal distance of no less then 24 inch. B. Be ...



ABB offers an innovative enclosure system for fire prevention, which is constructed of fireproof materials, features optimum technology and is available in a variety of economical designs. A wide range of ...

Contact Us

For more information, pricing, or custom network solutions, please contact us:

Website: <https://hashherbcafe.co.za>

Email: hello@hashherbcafe.co.za

Phone: +27 63 814 7295

Address: 15 Galaxy Road, Linbro Business Park, Johannesburg, 2065, South Africa

This document is for informational purposes only. Specifications subject to change without notice.

