

Dimensions of Data Center Cable Trays for Power Systems



Overview

Required Tray Width = (Total Cable Cross-Sectional Area ÷ Fill Ratio) ÷ Tray Height
Where: Project: Industrial control system with 20 power cables and 35 control cables
Given: Calculation: Recommendation: Use 150mm or 200mm cable tray to allow 25% future expansion.
Cable trays come in standardized dimensions based on international regulations like NEC (National Electrical Code) and IEC (International Electrotechnical Commission). Standard sizes ensure compatibility, safety, and ease of installation across different industries. The mechanical and electrical characteristics, tests, certifications, overall quality management, recommendations mentioned. Hubbell Wiring Device-Kellems and Hubbell Premise Wiring are divisions of Hubbell Incorporated, a U. headquartered manufacturer with over 130 years of supplying solutions for the electrical and data markets. Putting huge numbers of cables into a data. With demand for data center cable management solutions at an all-time high, Snake Tray® is the trusted partner for complete cable tray on any project. From our pre-fabricated Mega Snake to modular Snake Canyon for access floors, along with aluminum ladder and steel runway systems, our.

Dimensions of Data Center Cable Trays for Power Systems



When fitting cable trays and their accessories, the products are cut on site to create changes of direction, adjust sections, etc. Damage can also occur during handling; as a result, both the ...



Explore standard sizes by tray type, understand width and depth limits, and see how to calculate and choose compliant cable tray sizes for real projects.



The NEXTFRAME® Ladder Tray is available in popular gray and black finishes to complement equipment in any data center. The complete NEXTFRAME® Ladder Tray system features a broad ...



Learn how to calculate the perfect cable tray size and dimensions for your electrical project. This guide covers load capacity, fill ratios, and industry standards.



With demand for data center cable management solutions at an all-time high, Snake Tray® is the trusted partner for complete cable tray on any project.



Complete cable tray sizing guide with standard size chart, NEC calculation methods, and real engineering examples. Learn how to select the right cable tray dimensions for your project.



We will cover the main problems with lots of cables, how to design cable trays for this, what materials work best, and how smart systems can help manage everything.



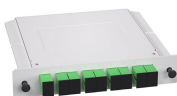
Cable tray layout, showing cable tray route to scale, with relationship between the tray and adjacent structural, electrical, and mechanical elements. Include the following:



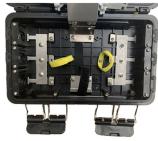
Selecting the appropriate electrical cable tray dimensions is a critical decision that directly impacts the safety, efficiency, and longevity of any industrial or commercial electrical installation. ...



In designing supports for a cable tray system, consideration should be given to the loads associated with future cable additions and any additional loading that may be applied to the cable tray system (e.g., ...



Explore standard sizes by tray type, understand width and depth limits, and see how to calculate and choose compliant cable tray sizes for real projects.



Many electrical systems employ cable trays. They route cables safely & efficiently. NEC defines minimum cable tray size & electrical installation specifications. These guidelines protect ...

Contact Us

For more information, pricing, or custom network solutions, please contact us:

Website: <https://hashherbcafe.co.za>

Email: hello@hashherbcafe.co.za

Phone: +27 63 814 7295

Address: 15 Galaxy Road, Linbro Business Park, Johannesburg, 2065, South Africa

This document is for informational purposes only. Specifications subject to change without notice.

